

LS adapter with integrated filter | LEDUC CODE

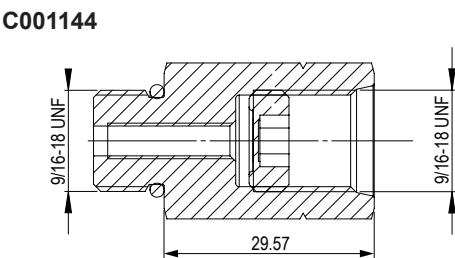
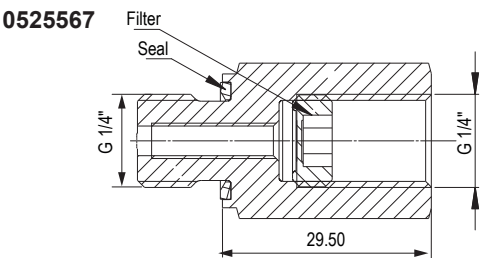
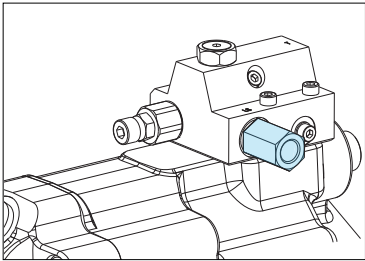
Filter fitting for LS line connection

Kit reference	LS dimension	Type of pump
0525567	G1/4"	TXV
C001144	9/16-18 UNF	TXVA (SAE)

► Technical characteristics

- It protects the LS regulator against contamination coming from the circuit.
- Filter can be removed for maintenance.
- Filtration: 150 microns.

► Drawings for both versions of the kit ( dimensions in mm):



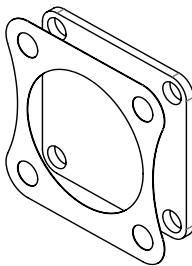
SEAL + FILTER | LEDUC CODE K000028

The LS filter protects the TXV's Load Sensing valve against contaminations coming from the hydraulic circuit.  
**Mounted as standard on all TXV pumps** (except for Constant Torque).



KIT CLOSING PLATE + SEAL | LEDUC CODE P001512

FOR TXV 130 THROUGH SHAFT



CARDAN PLATE - DIN 90 and DIN 100

The cardan plate enables the pump shaft to be connected to a cardan shaft with interface as on drawing on the right.  
Note: the maximum admissible torque is limited by the drive shaft.  
The deflector is supplied with the cardan plate.

Type	LEDUC code	ØA	ØB	C	D	E	F	ØG	H
DIN 90	056315	90	47	43	2	10	62	55	15
DIN 100	0519040	100	57	43	2	10	64	55	15

