

Drainless motor

bent axis hydraulic motor

HYDRO LEDUC is now able to offer drainless motors for either **single direction of rotation** or **bi-directional use**, under certain conditions and on request (giving details of your application).

ADVANTAGES

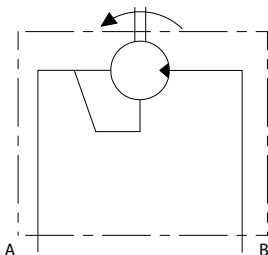
No drainline needed

- ▶ Only two hose lines are required: supply line and output.
 - ▶ The motor is drained through the return line.
- It is fitted with a high pressure lip seal.

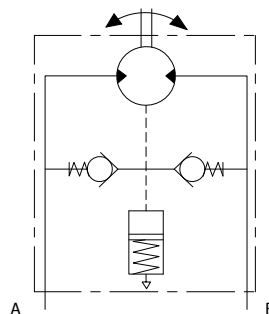
CHARACTERISTICS

- Working speed:
Please consult our Technical Department with details of your applications.
- Max. pressure on the return line: 25 bar.

► Schematic drawing for use in single direction of rotation



► Schematic drawing for bi-directional use



For **bi-directional** applications, the motor is fitted with an accumulator integrated in the back piece, to compensate possible pressure peaks in the housing (for example from rapid change in direction).

