

## EIGENSCHAFTEN

Motorausführung	Schluckvolumen (ccm/U.)	Max. zulässige Dauerdrehzahl (1) (U/min.)	Max. zulässige Spitzendrehzahl (1) (U/min.)	Max. Schluckstrom (L/min.)	Max. Drehmoment in Abhängigkeit des Drucks (Nm/bar)	Drehmoment bei 350 bar (Nm)	Max. zulässiger Dauerdruck/ Spitzendruck (bar)	Gewicht (kg)
MSI 28	27,7	6300	6900	175	0,44	154	400 / 450	11,5
MSI 32	32,1	6300	6900	202	0,51	179	400 / 450	11,5
MSI 41	41,1	5600	6200	230	0,65	229	400 / 450	11,5
MSI 45	45,4	5000	5500	227	0,72	253	400 / 450	17
MSI 50	50,3	5000	5500	252	0,80	280	400 / 450	19
MSI 63	63,3	5000	5500	315	1,00	351	400 / 450	19
MSI 80	80,4	4500	5000	362	1,28	448	400 / 450	26
MSI 90	90	4500	5000	405	1,43	501	400 / 450	26
MSI 108	108,3	4000	4400	433	1,72	603	400 / 450	26
MSI 108 R (2)	108,3	3400	4500	368	1,72	603	400 / 450	33
MSI 125	125,3	3400	4500	426	2,00	699	400 / 450	33
MSI 160	160,3	3600	4000	576	2,55	891	400 / 450	45,3
MSI 180	180,3	3600	4000	650	2,87	1006	400 / 450	45,3

(1) Für höhere Drehzahlen nehmen Sie bitte Kontakt mit uns auf.

(2) Der MSI 108 R Motor entspricht den Abmessungen des MSI 125 Motors.

## ► Max. zulässige Kräfte

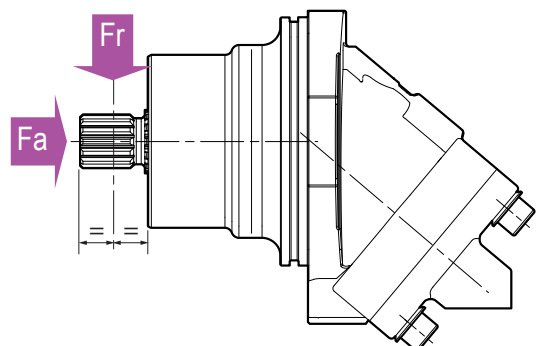
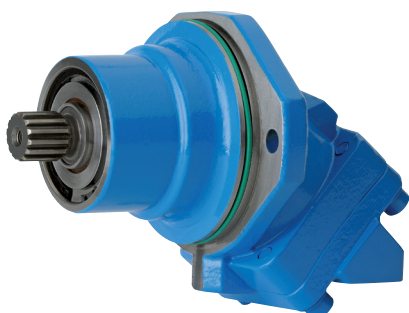
Motorausführung		28	32	41	45	50	63	80	90	108	108 R	125	160	180
Fr	N	6200	6500	7000	6500	7500	9000	10500	11000	11500	12500	14500	18000	20000
Fa	N/bar *	28	30	40	40	40	50	60	67	80	80	86	85	95

Fr: Radialkraft gemessen in der Mitte der Motorwelle

Fa: Axialkraft (wirkt axial auf die Motorwelle)

\* Differenzdruck zwischen A und B.

Für weitere Kräfte nehmen Sie bitte mit uns Kontakt auf.

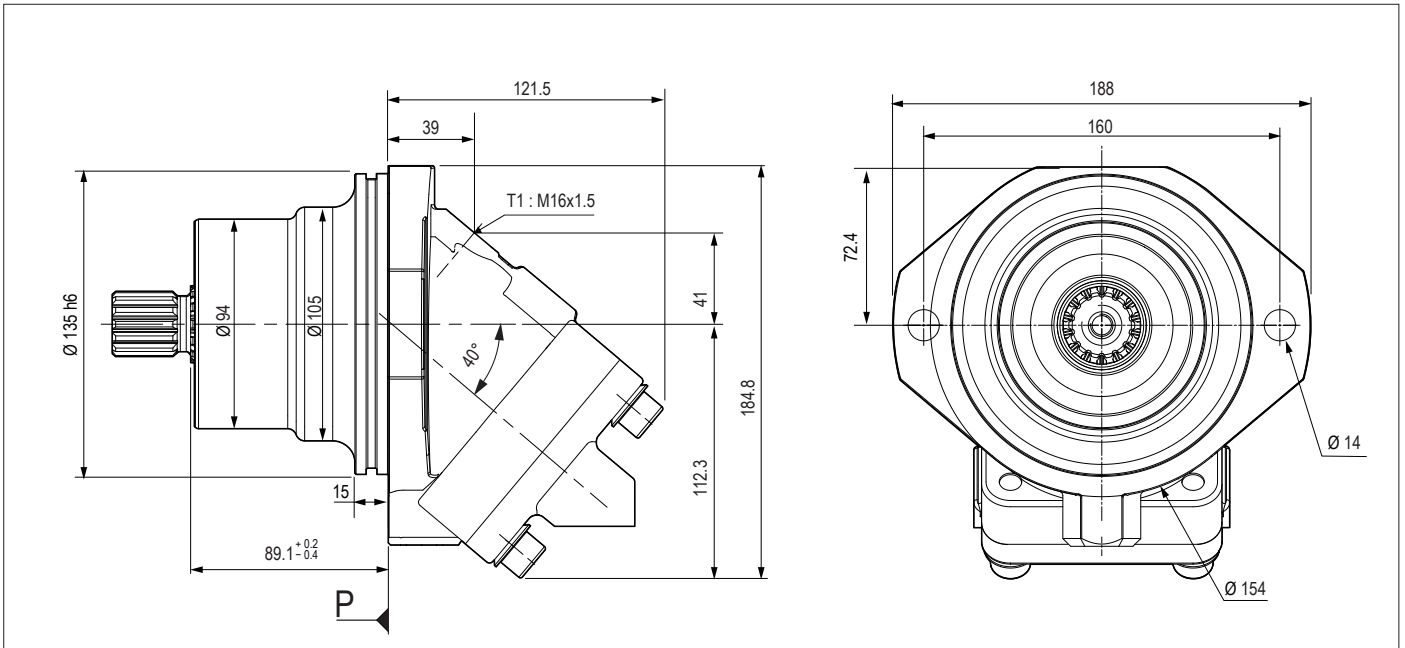


MSI	...	B	...	...	M1	...	...	...	...	SP	Um die Bestellbezeichnung Ihres Motors zu ermitteln wählen Sie aus den Optionen 02, 04, 05, 07, 08, 09 und 10 in der Auswahltable.							
01	02	03	04	05	06	07	08	09	10	11								
<b>Motor</b>																		
01	Einschubmotoren															MSI		
<b>Schluckvolumen</b>																		
02				28	32	41	45	50	63	80	90	108	108 R	125	160	180		
<b>Flansch</b>																		
03	ISO 3019-2, 2-Loch-Flansch															B		
<b>Welle</b>																		
04	DIN 5480 Zahnwelle			W30	W30	W30	W30	W30	W30	W40	W40	W40	W45	W45	W50	W50	W1	
				W25	W25	-	W35	W35	W35	W35	-	-	W40	W40	-	-	W2	
	DIN 6885 zylindrische Welle			Ø30	Ø30	Ø30	Ø30	Ø30	Ø30	Ø40	Ø40	Ø40	Ø45	Ø45	Ø50	Ø50	D1	
				Ø25	Ø25	-	Ø35	Ø35	Ø35	-	-	-	Ø40	-	-	-	D2	
<b>Anschlüsse A und B</b>																		
05	SAE Flanschanschluss	Unten	0	•	•	•	-	•	•	•	•	•	•	•	•	•	L0	
		Hinten	0	•	•	•	-	•	•	•	•	•	•	•	•	•	M0	
		Seitlich	0	•	•	•	-	•	•	•	•	•	•	•	•	•	•	N0
			1	•	•	•	-	•	•	•	•	•	•	•	•	•	•	N1
Gewindean- schluss	Seitlich	0	•	•	•	-	•	•	•	•	•	-	-	-	-	-	Q0	
		1	•	•	•	-	•	•	•	•	•	-	-	-	-	-	Q1	
		Hinten	0	•	•	•	-	•	•	•	•	•	-	-	-	-	-	P0
			0 = nicht möglich für Einsatz mit Ventilen 1 = Für Einsatz von Spülventilen															
<b>Leckölanschlüsse T1 und T2</b>																		
06				1	1	1	1	1	1	1	1	1	1	1	1	1	M1	
<b>Vorbereitet für Betrieb mit Drehzahlsensor</b>																		
07	Ja			•	•	•	•	•	•	•	•	•	•	•	•	•	•	1
	Nein			•	•	•	•	•	•	•	•	•	•	•	•	•	•	•
<b>Drehzahlsensor</b>																		
08	1 Frequenz-Signal			•	•	•	•	•	•	•	•	•	•	•	•	•	•	1
	1 Signal mit Steckverbinder			•	•	•	•	•	•	•	•	•	•	•	•	•	•	1P
	2 Signale mit Steckverbinder			•	•	•	•	•	•	•	•	•	•	•	•	•	•	2P
	Nein			•	•	•	•	•	•	•	•	•	•	•	•	•	•	•
<b>Spülventile</b>																		
09	Ohne			•	•	•	•	•	•	•	•	•	•	•	•	•	•	SV
	Durchfluss	4,25 l/min*		•	•	•	•	•	•	•	•	•	•	•	•	•	•	VB04
		10 l/min*		•	•	•	•	•	•	•	•	•	•	•	•	•	•	VB10
		14 l/min*		•	•	•	•	•	•	•	•	•	•	•	•	•	•	VB14
<b>Tieftemperaturausführung</b>																		
10	Ja(NBR)			•	•	•	•	•	•	•	•	•	•	•	•	•	•	N
	Nein (FKM)			•	•	•	•	•	•	•	•	•	•	•	•	•	•	F

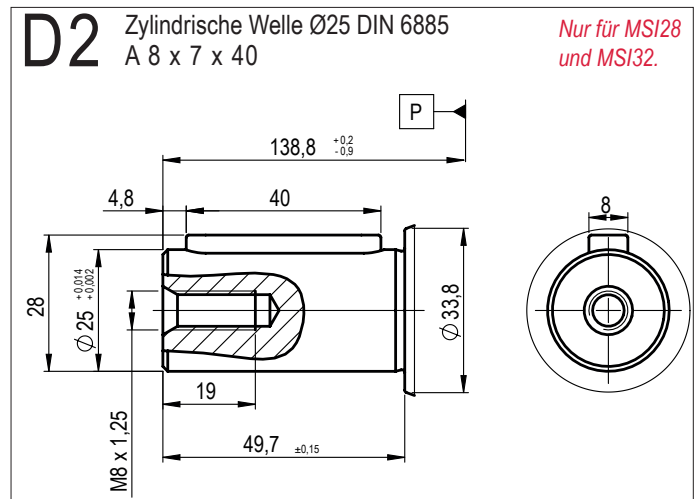
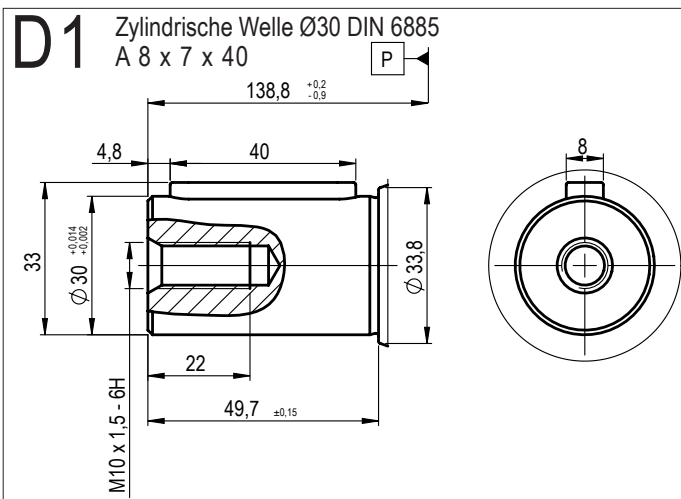
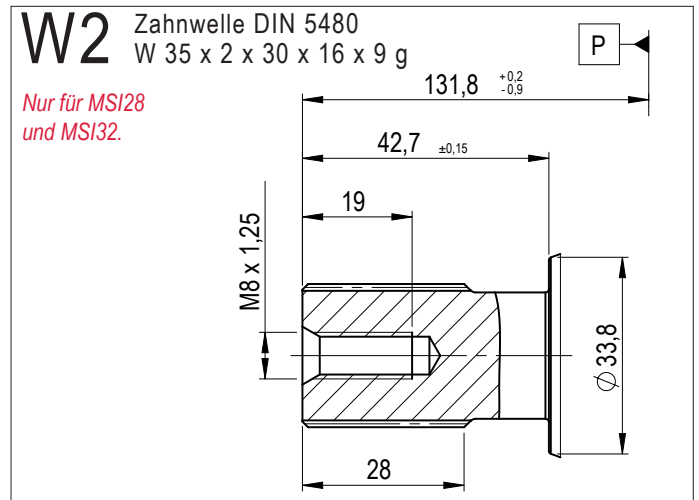
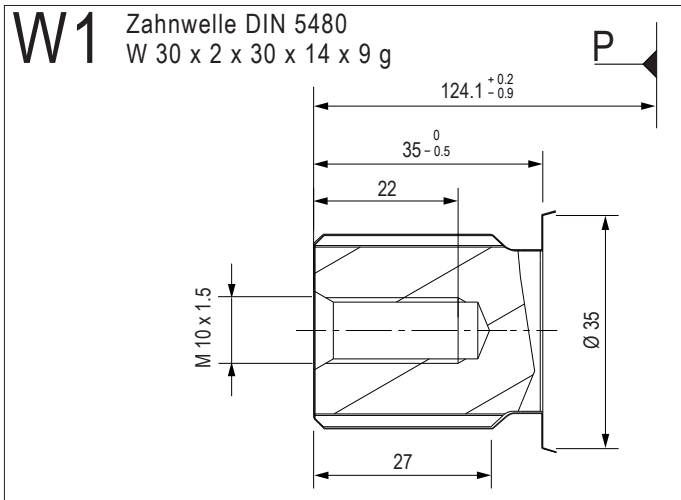
**Legende:**

- Verfügbare Modelle
- Auf Anfrage
- Momentan nicht erhältlich

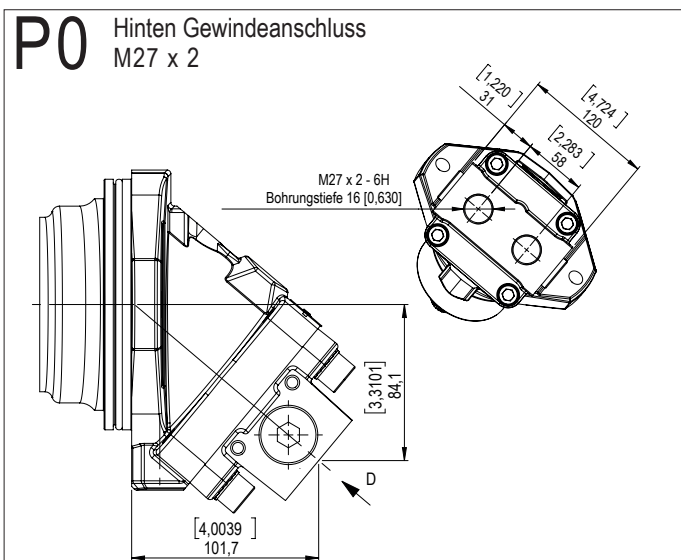
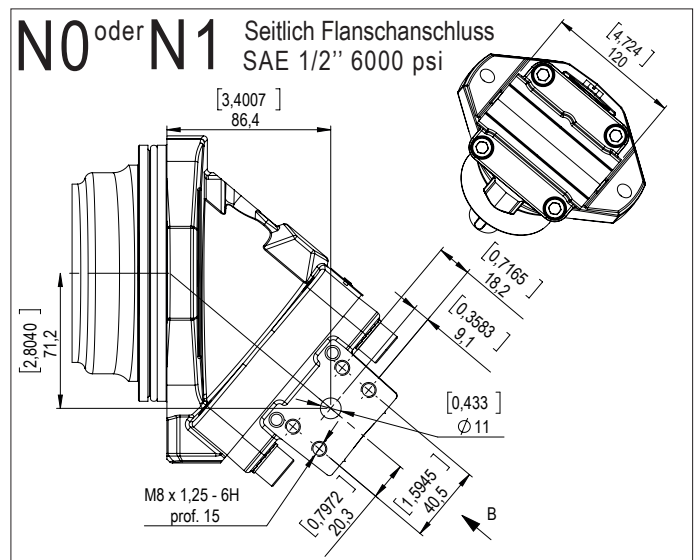
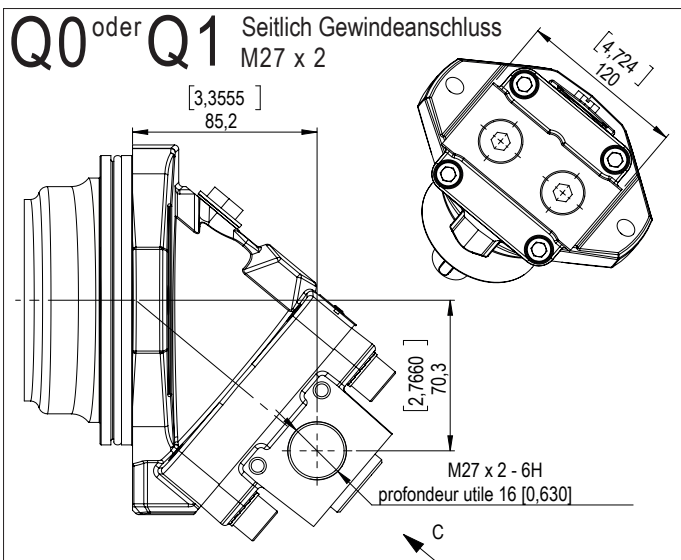
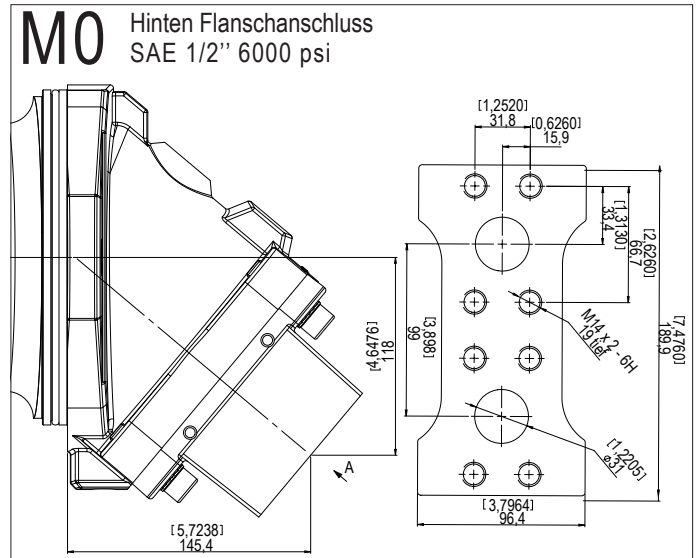
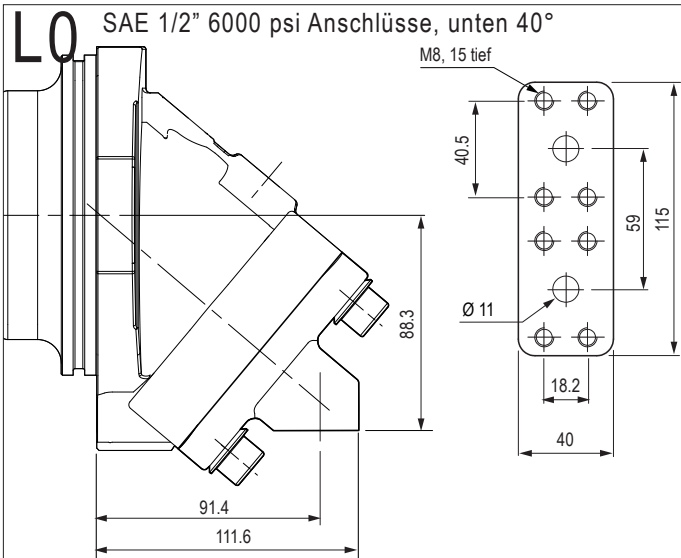
 \*( $\Delta p = 25 \text{ bar}$ )



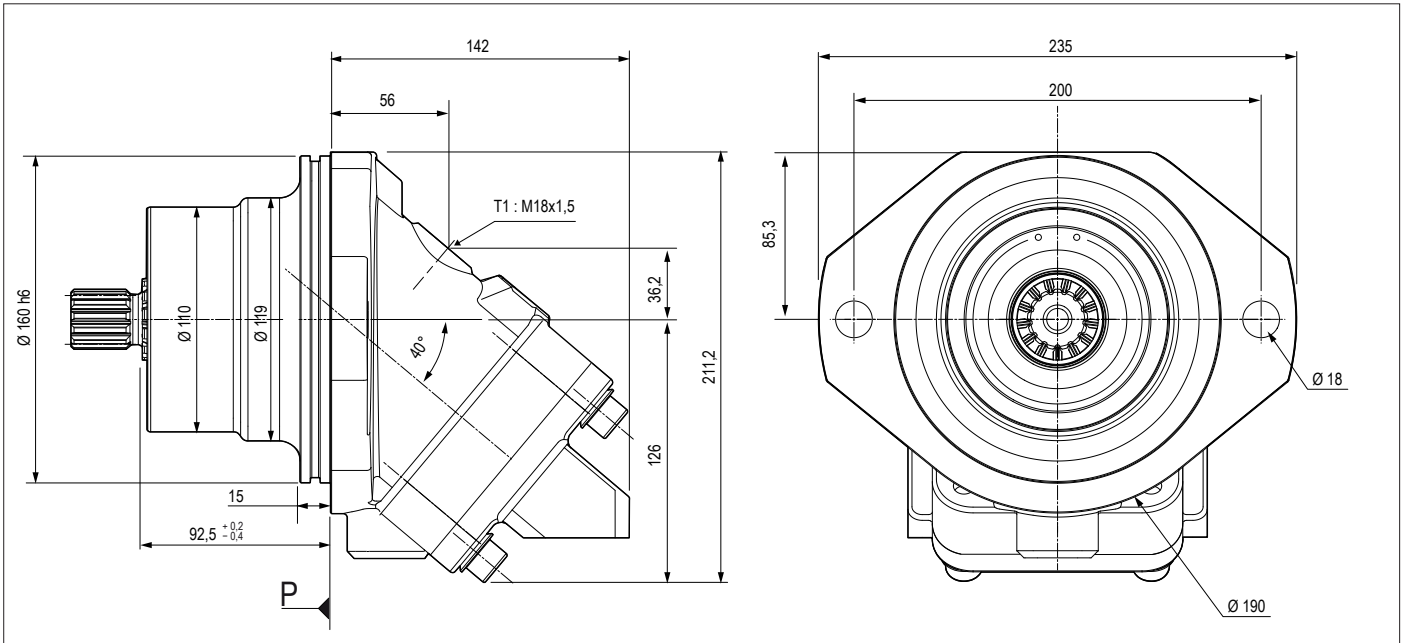
► Wellenausführung



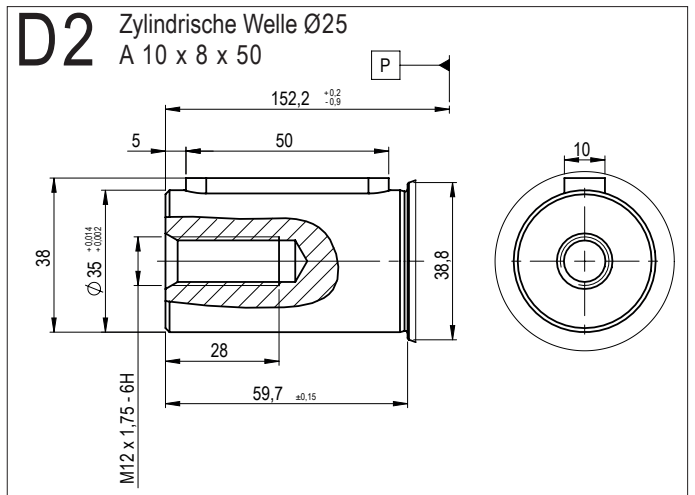
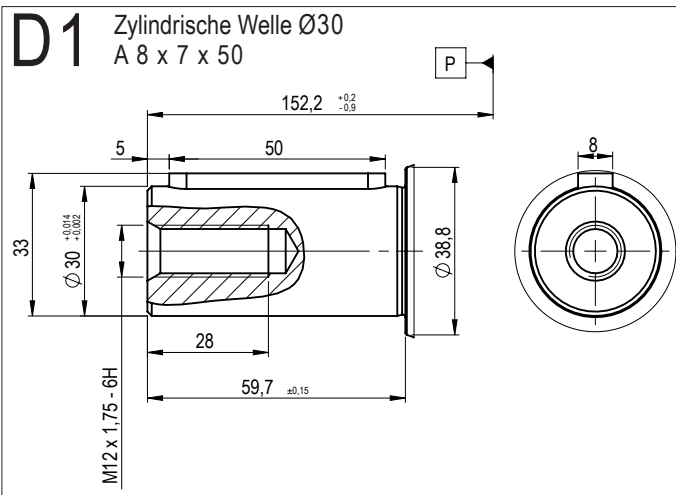
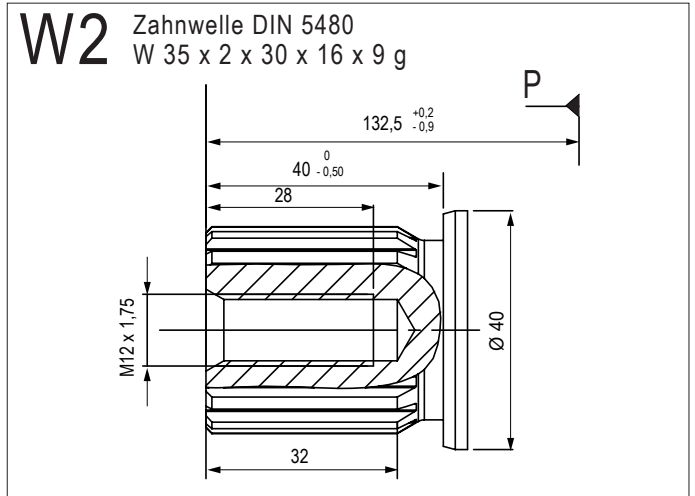
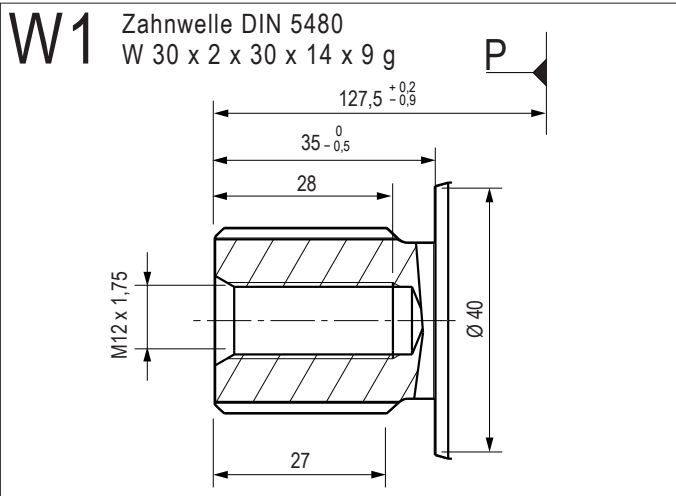
► **Eintritt / Austritt**



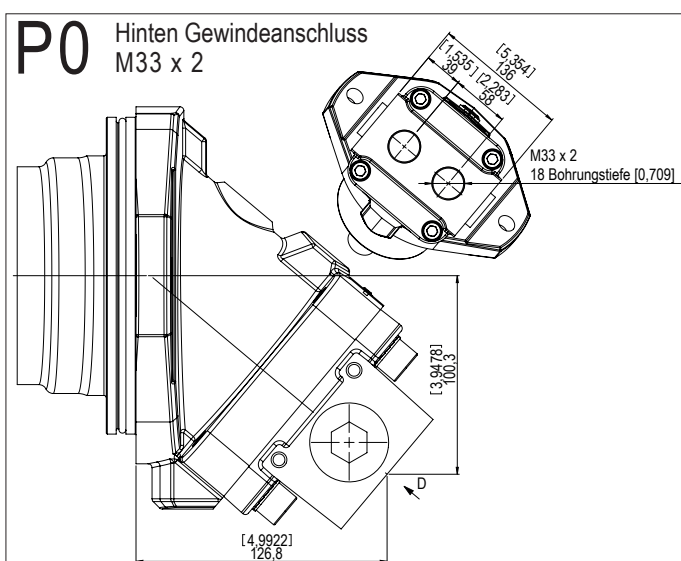
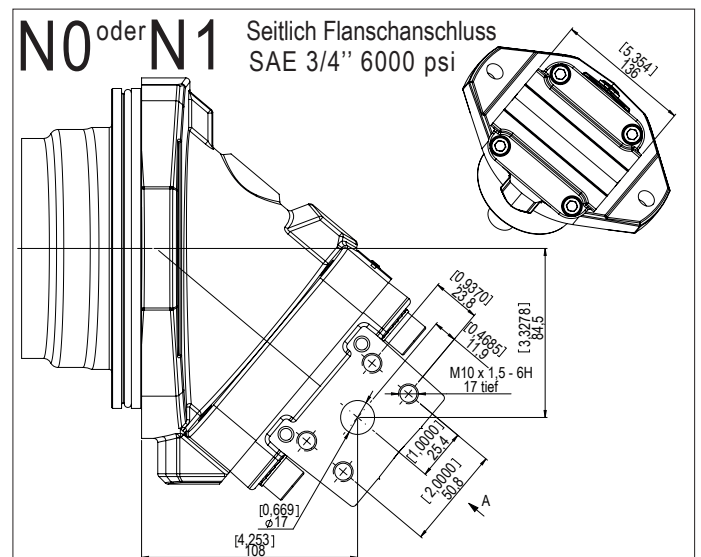
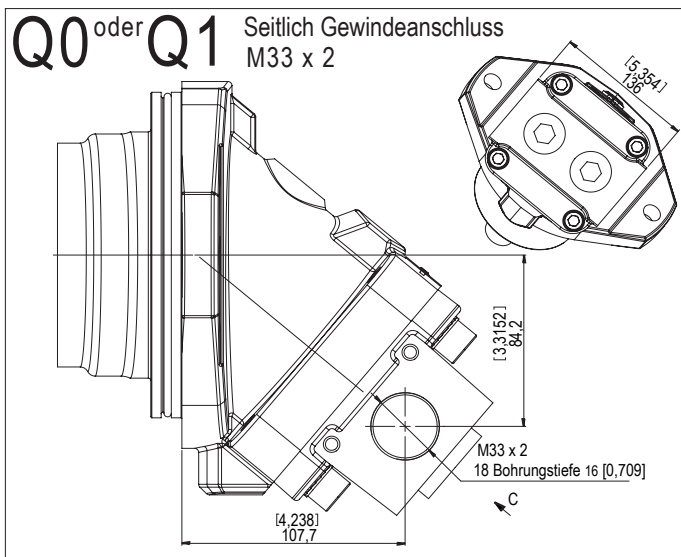
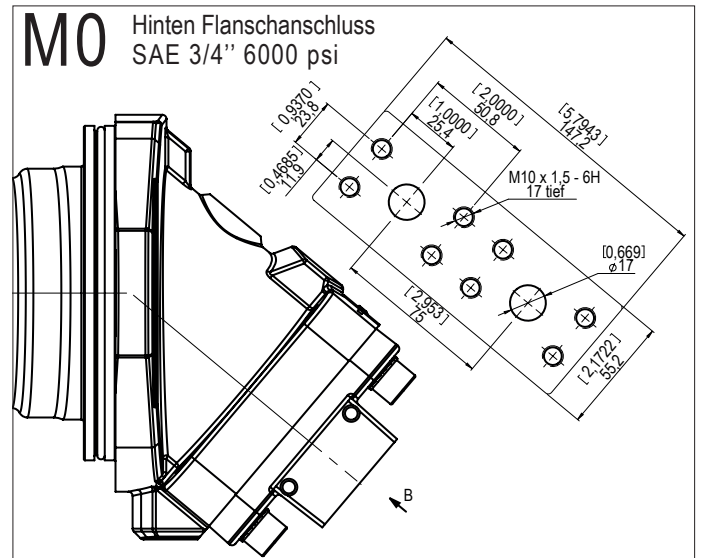
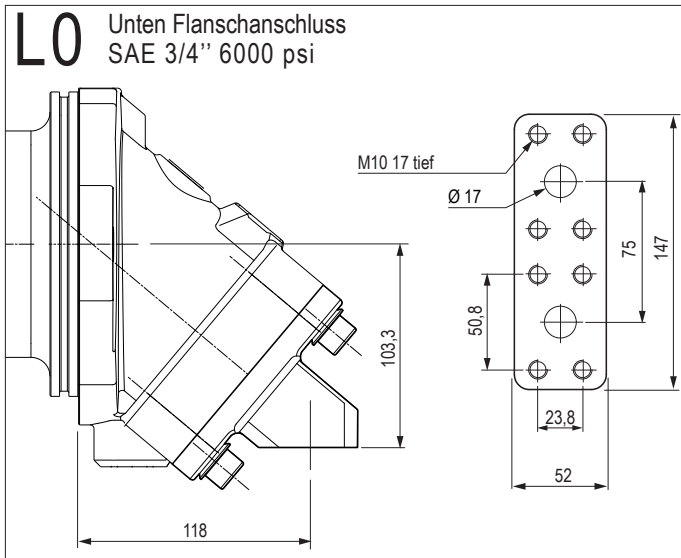
Die Abmessungen dienen zur Orientierung. Maße in mm und [Zoll].



### ► Wellenausführung

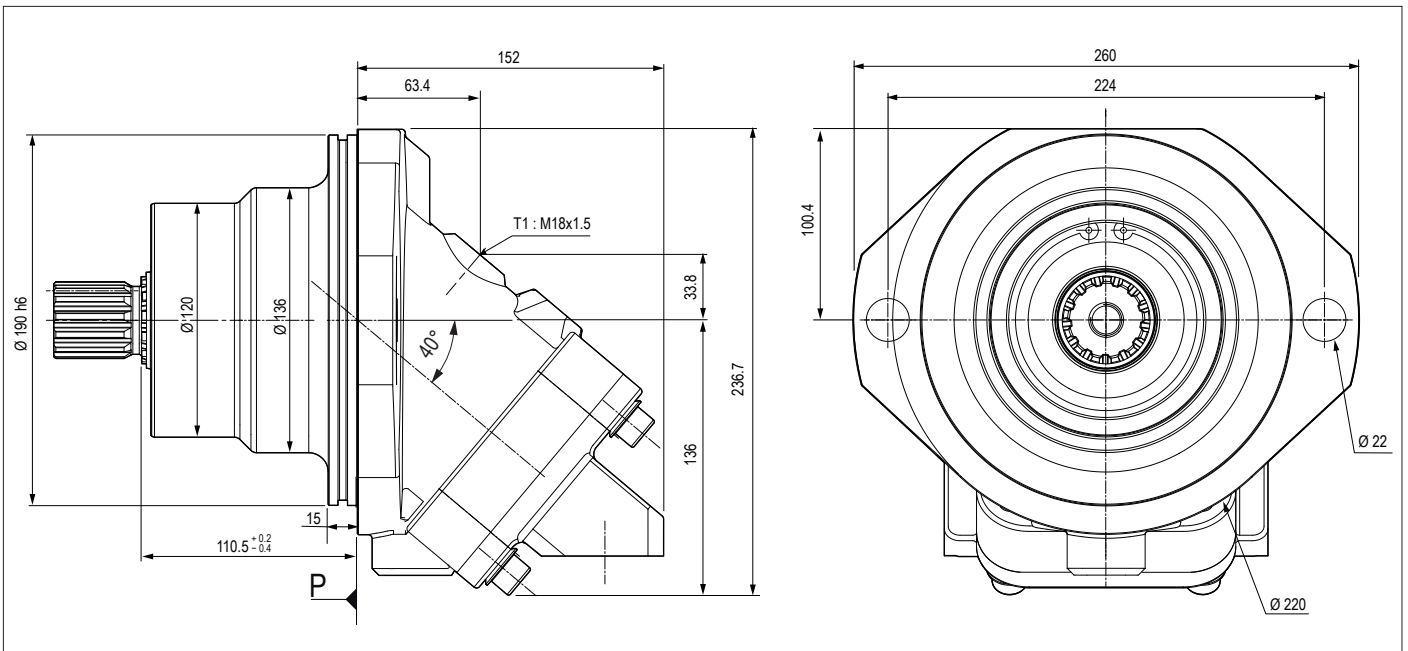


► **Eintritt / Austritt**

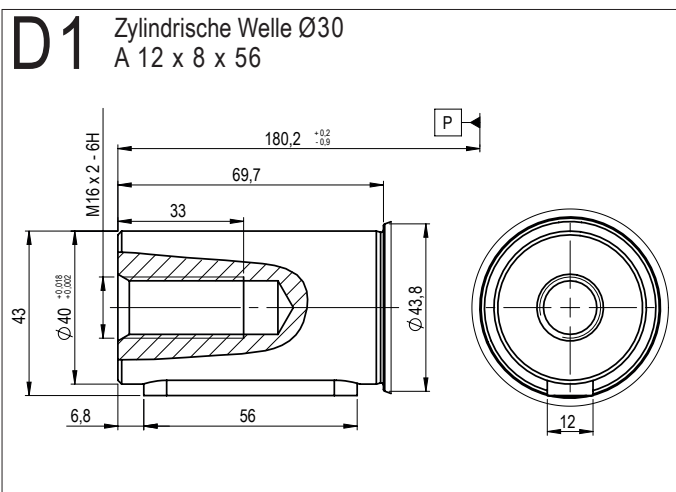
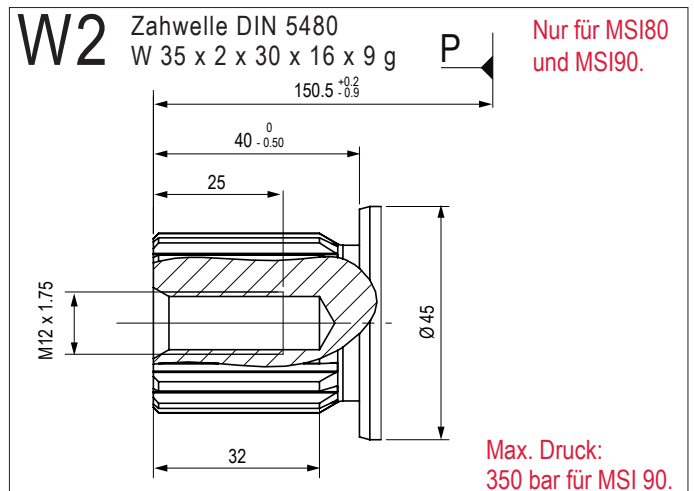
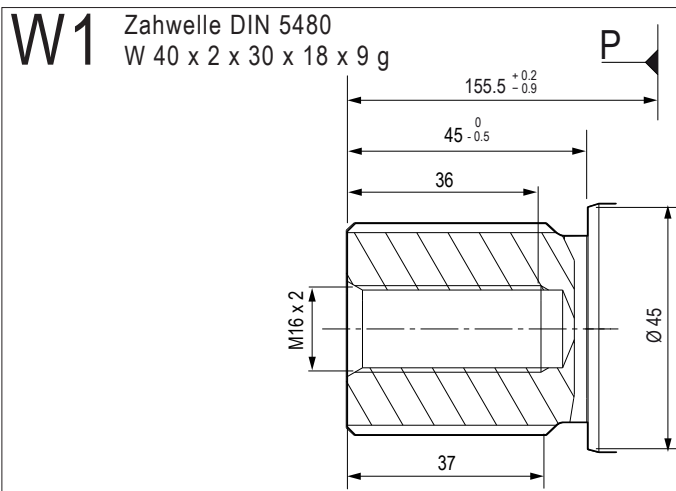


MSI Serie

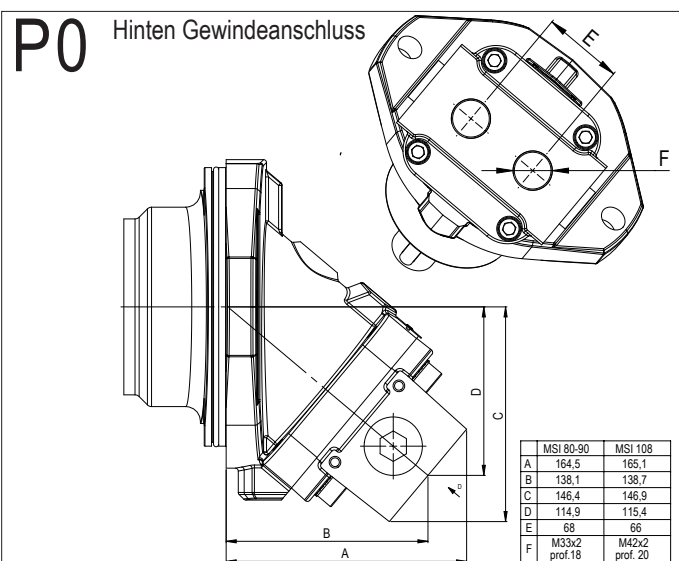
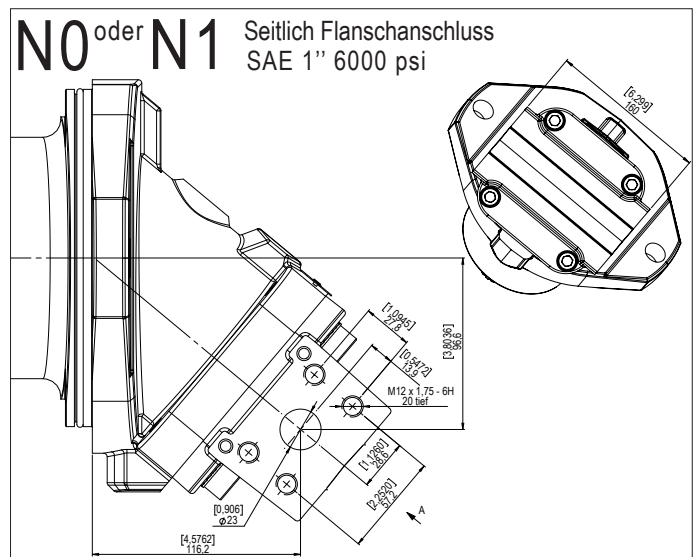
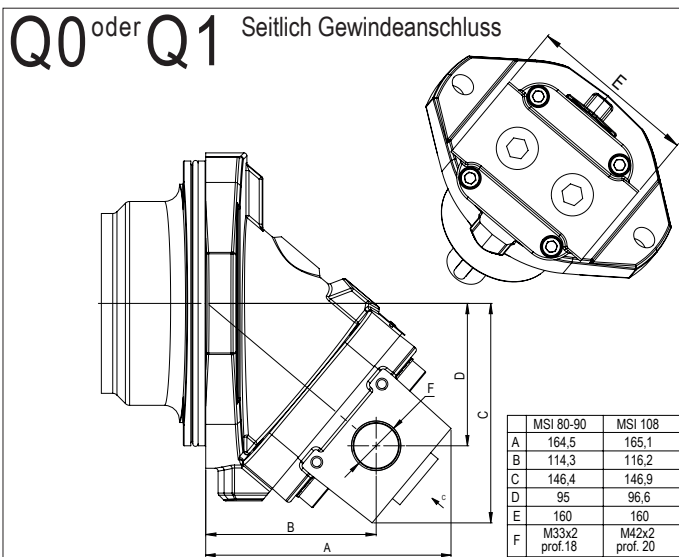
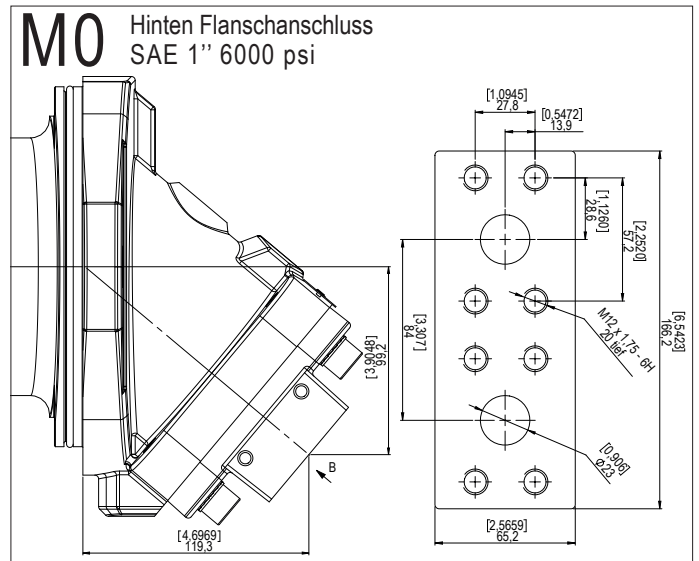
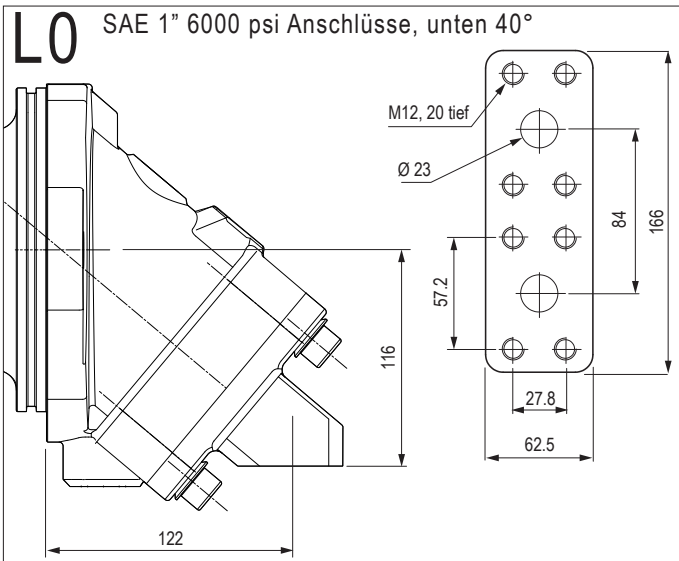
Die Abmessungen dienen zur Orientierung. Maße in mm und [Zoll].



### ► Wellenausführung



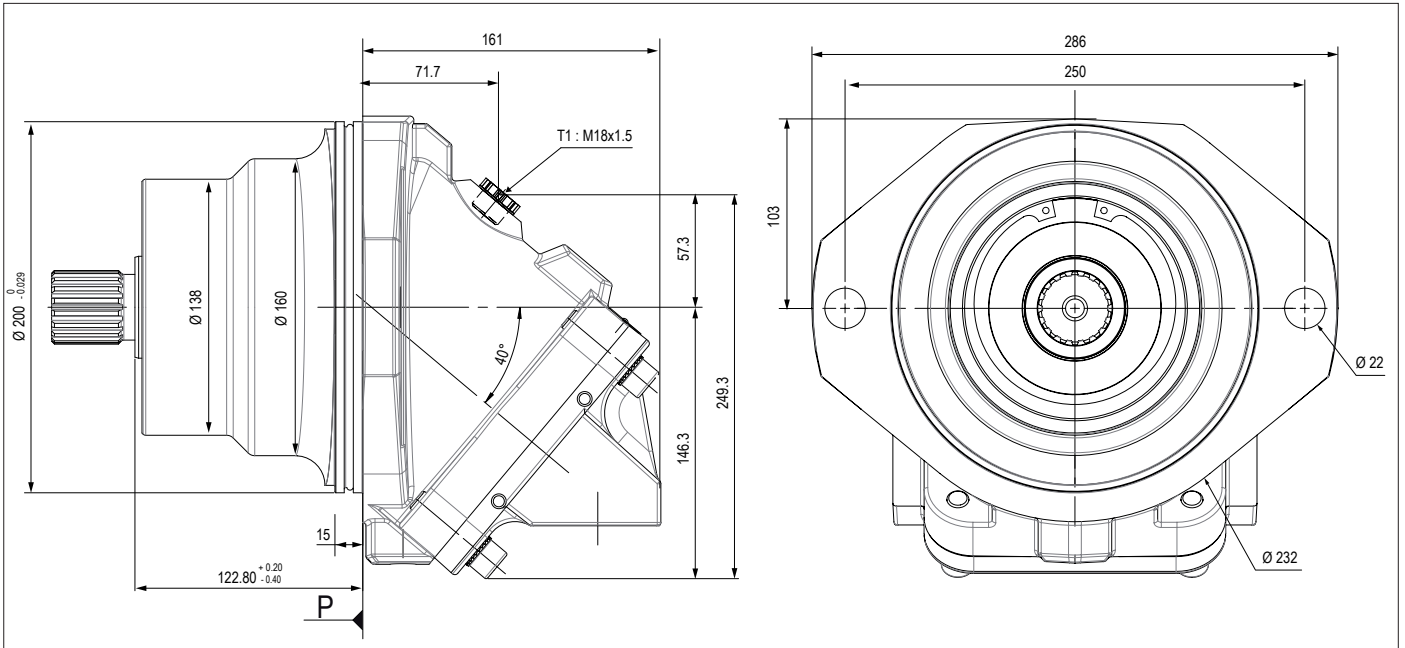
► Eintritt / Austritt



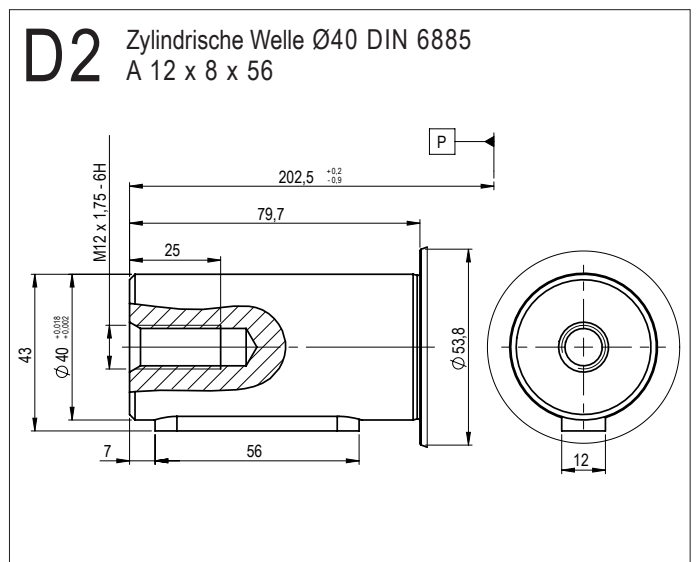
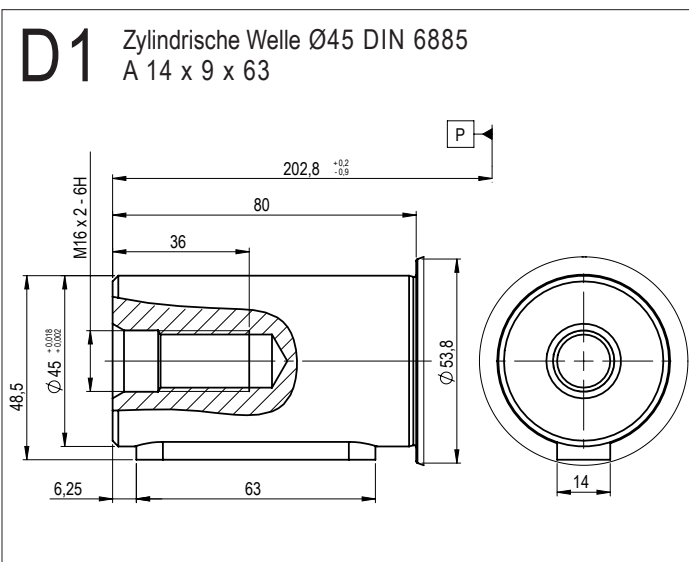
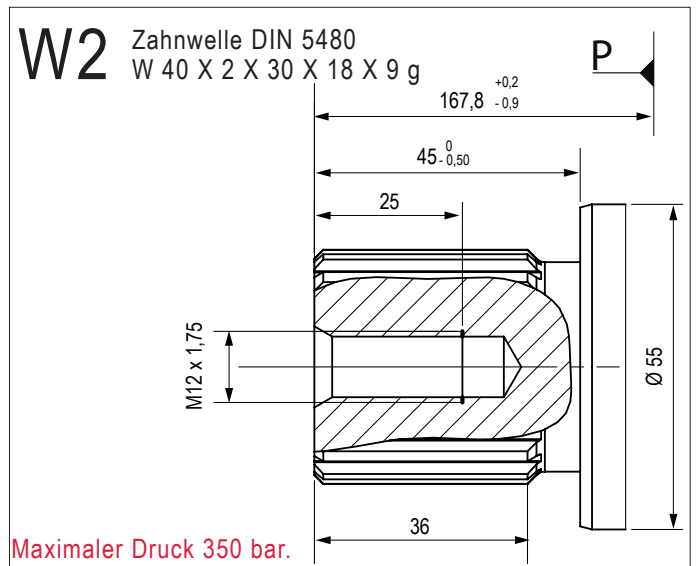
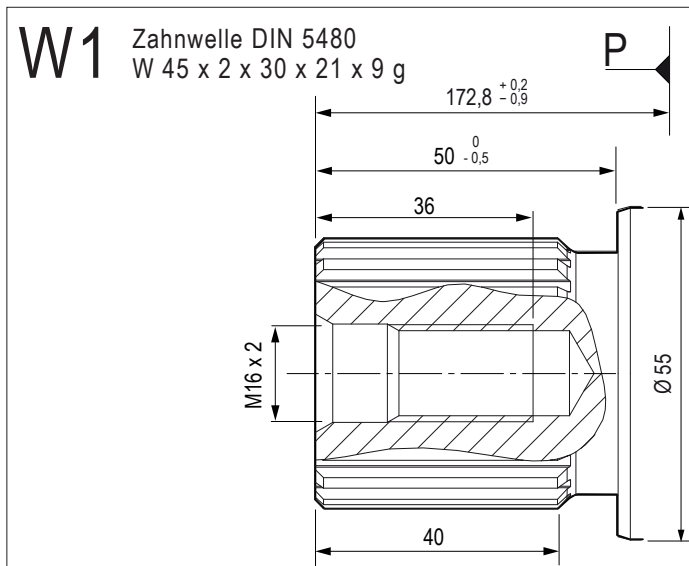
MSI Serie

Die Abmessungen dienen zur Orientierung. Maße in mm und [Zoll].



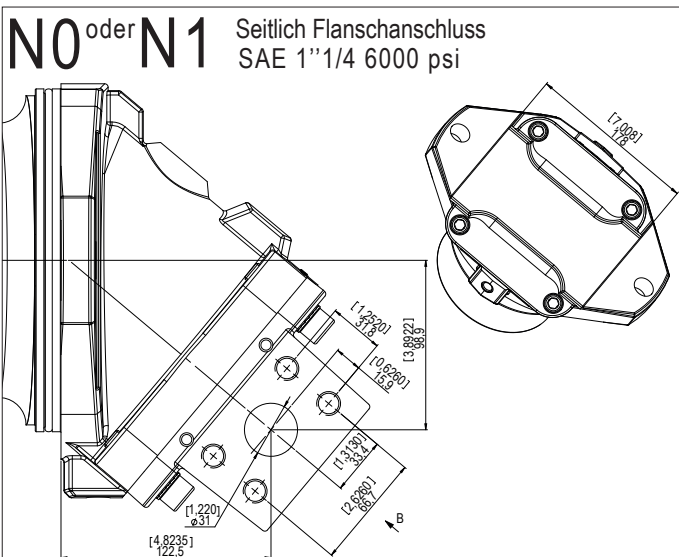
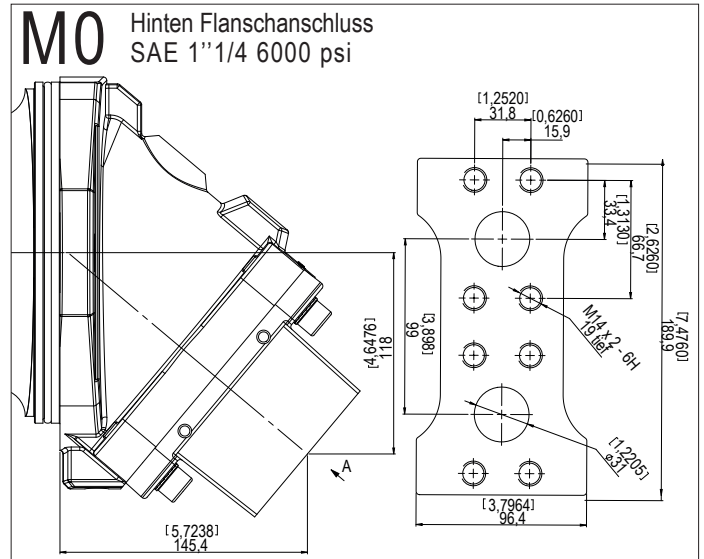
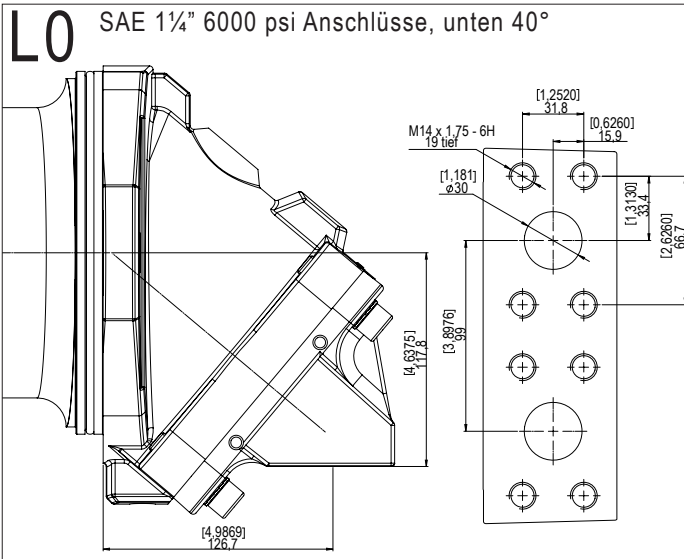


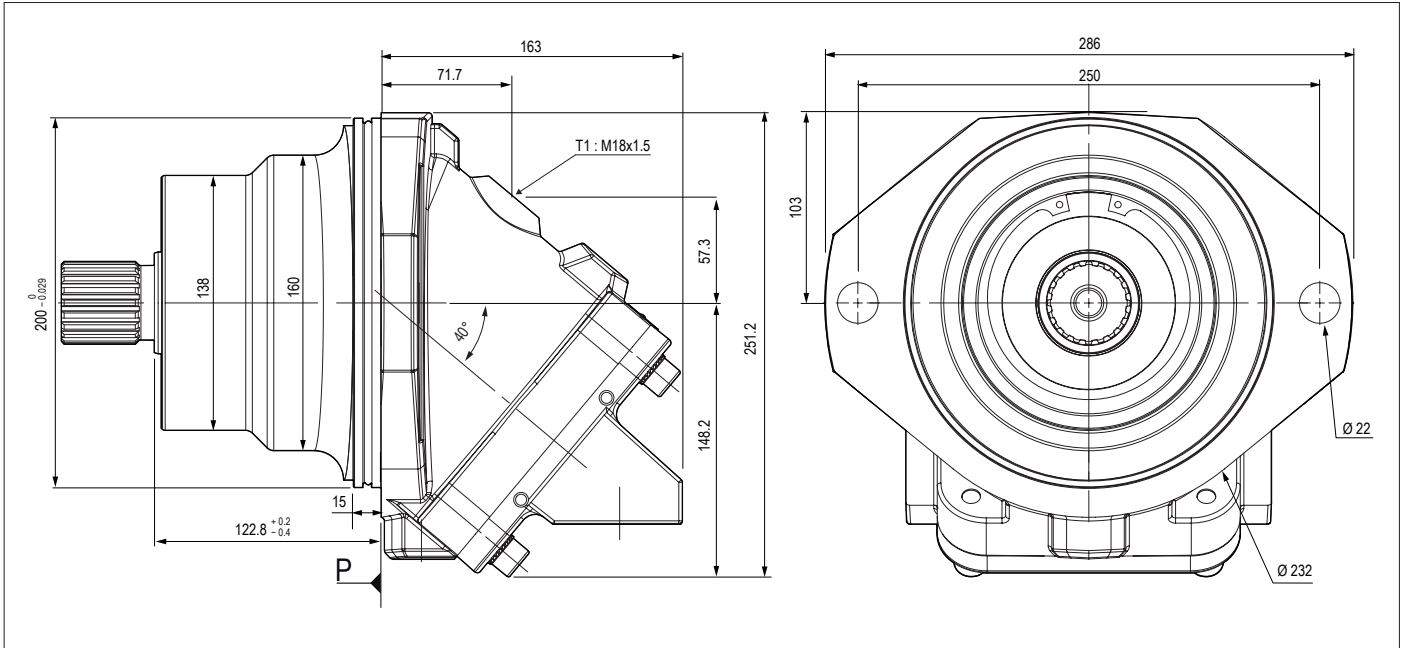
### ► Wellenausführung



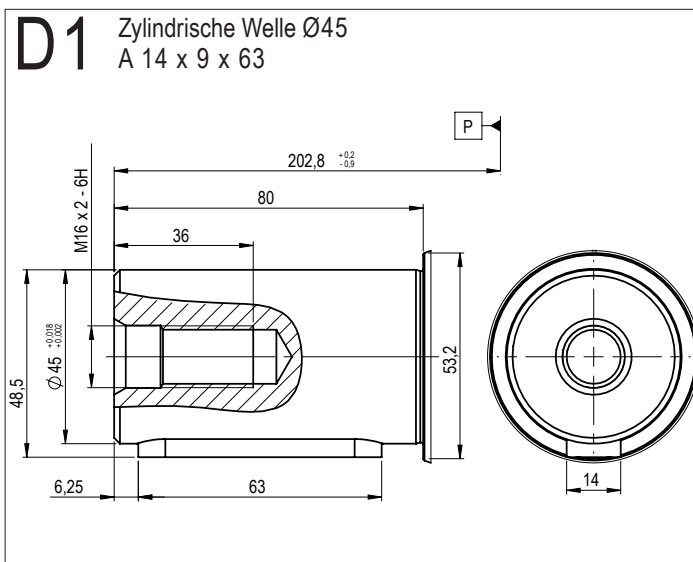
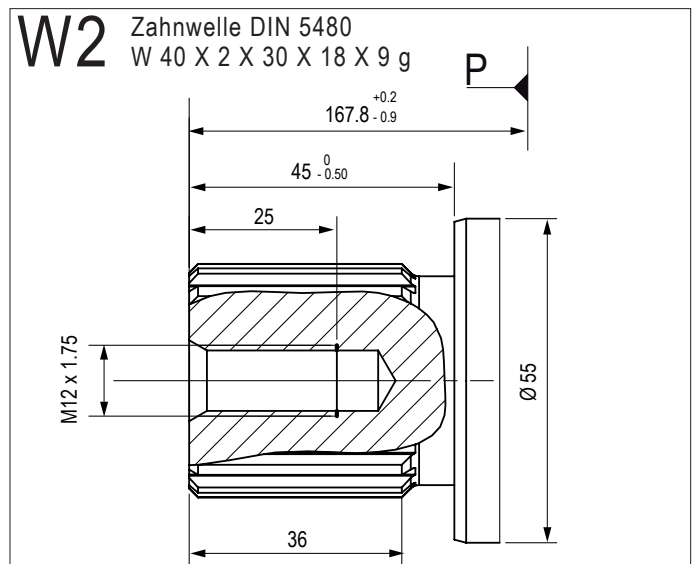
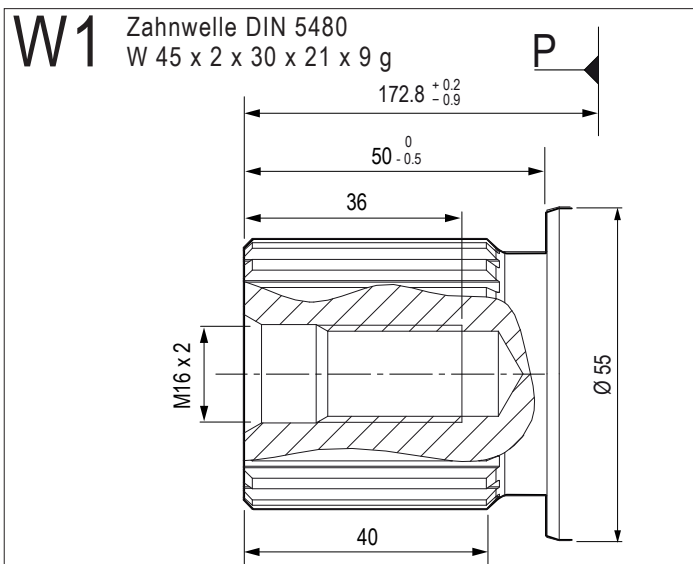
Die Abmessungen dienen zur Orientierung. Maße in mm und [Zoll].

► Eintritt / Austritt

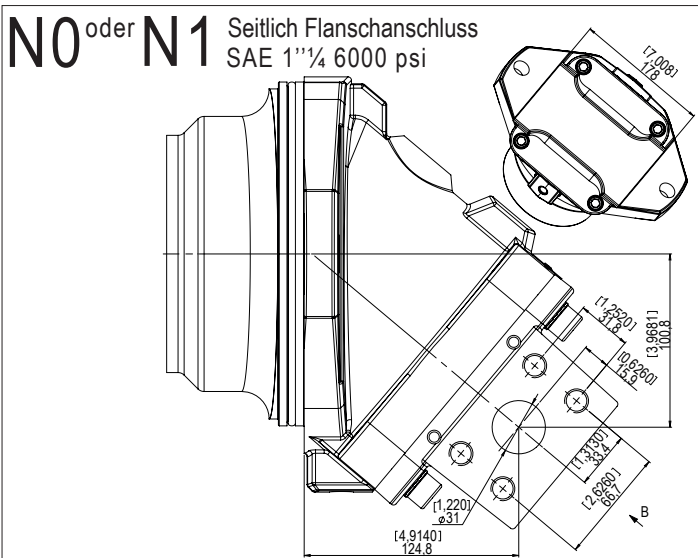
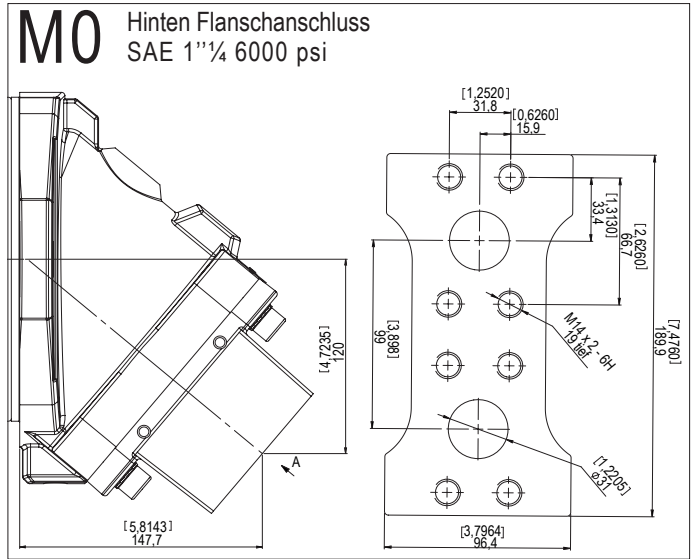
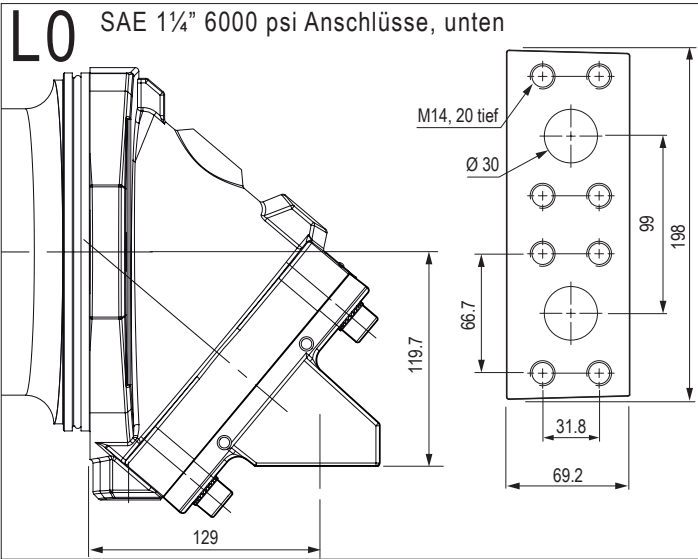


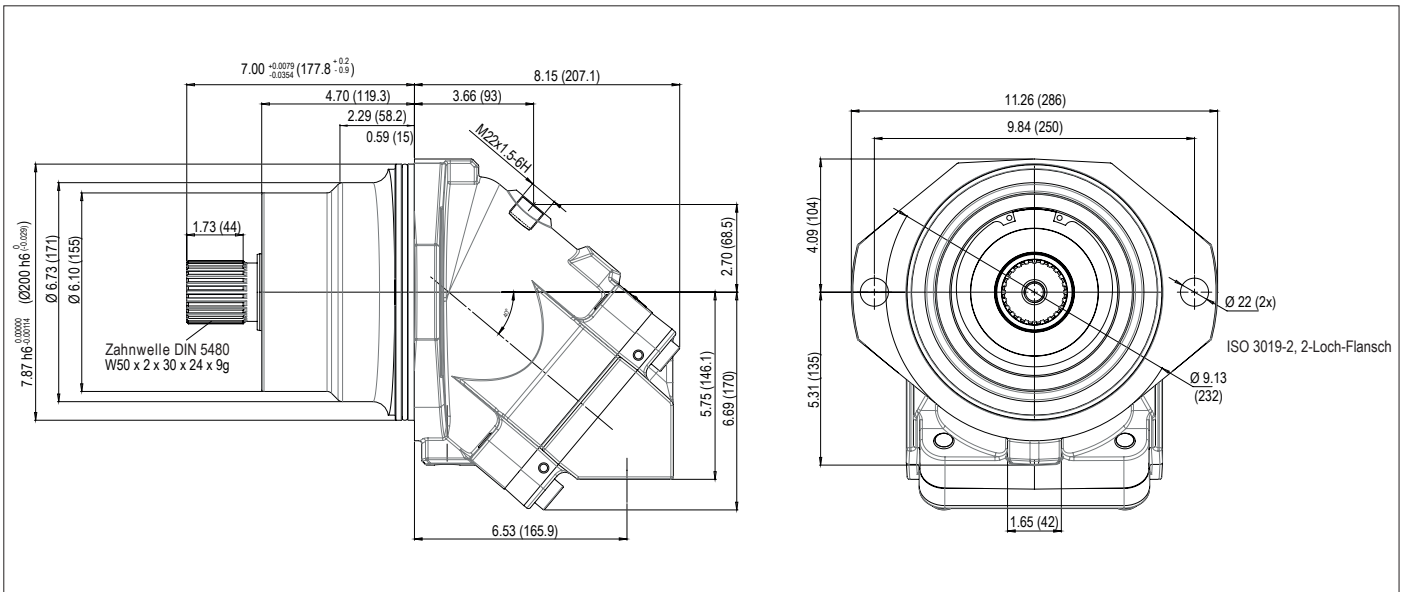


### ► Wellenausführung

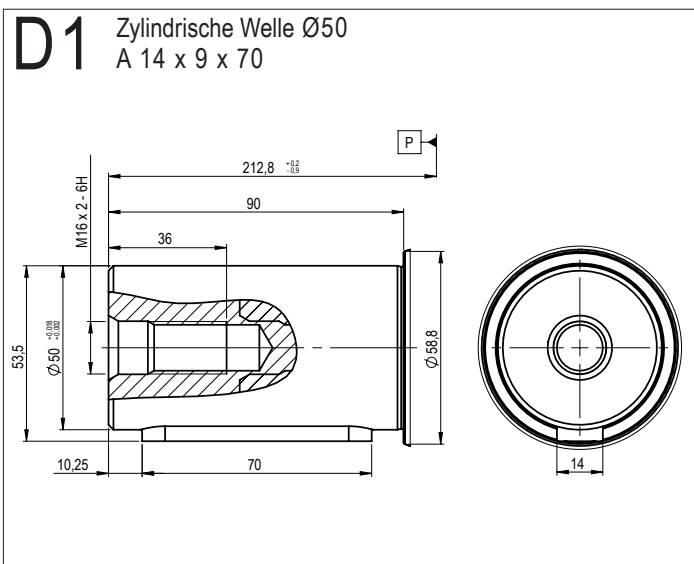
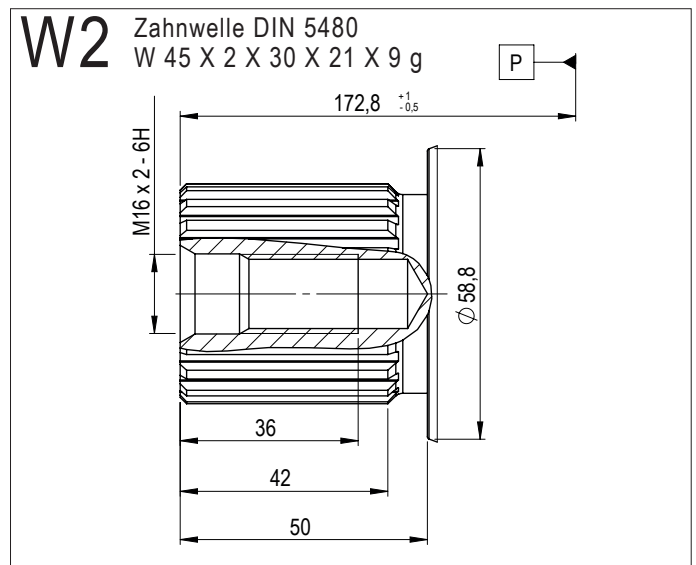
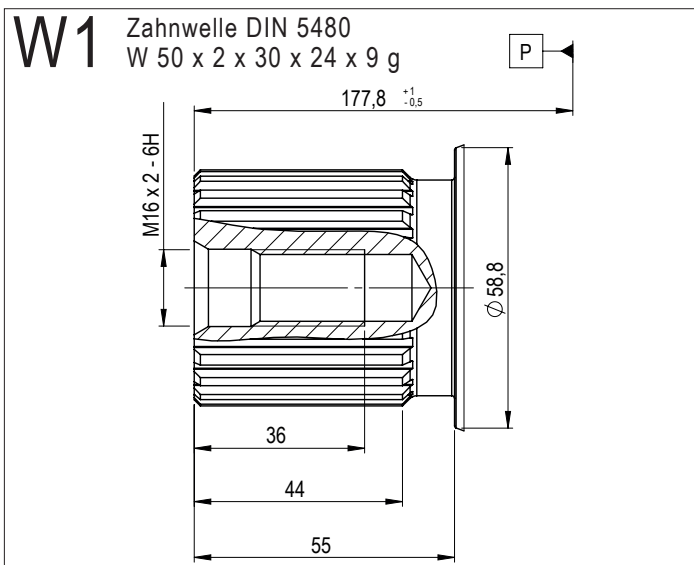


► Eintritt / Austritt





► Wellenausführung



► Eintritt / Austritt

