



New models of MSI series motors



MSI160
MSI180

- ▶ Extension of MSI series motor range, now available in displacement 160cc/rev and 180 cc/rev.
- ▶ Different types of shaft, splined according DIN5480 or keyed according DIN6885.
- ▶ Different types of back cover with SAE flange.

▶ Characteristics and performances

Motor model	Displacement		Continuous max. speed (1)	Intermittent max. speed (1)	Max. flow absorbed		Torque		Torque at 350 bar (5100 psi)		Theoretical maximal power at 5800 psi 400 bar		Max. allowable pressure continuous / peak		Weight (kg)	
	cu.in/rev	cc/rev	rpm	rpm	gpm	l/mn	lbf.ft/psi	N.m/bar	lbf ft	N.m	HP	kW	psi	bar	lbs	Kg
MSI 160	9.76	160	3600	4000	152.2	576	0.1289	2.55	657	891	514.7	384	5800 / 6525	400 / 450	100	45.3
MSI 180	11.02	180.6	3600	4000	171.8	650	0.1455	2.87	742	1006	581	433.4	5800 / 6525	400 / 450	100	45.3

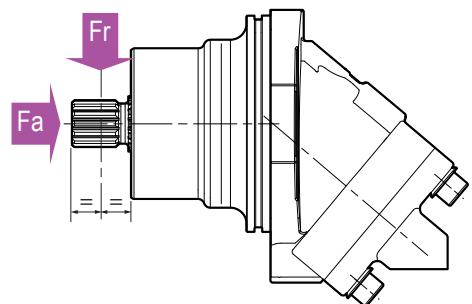
(1) For higher speeds, please contact us.

▶ Acceptable forces applied to motor shaft

Motor model		160	180
Fr	lbf	4050	4500
	N	18000	20000
Fa	lbf/psi	1.32	1.47
	N/psi	5.86	6.55
	(N/bar) *	(85)	(95)

Fr: radial force measured at mid point of length of shaft.
Fa: axial force which tends to push the shaft inwards.

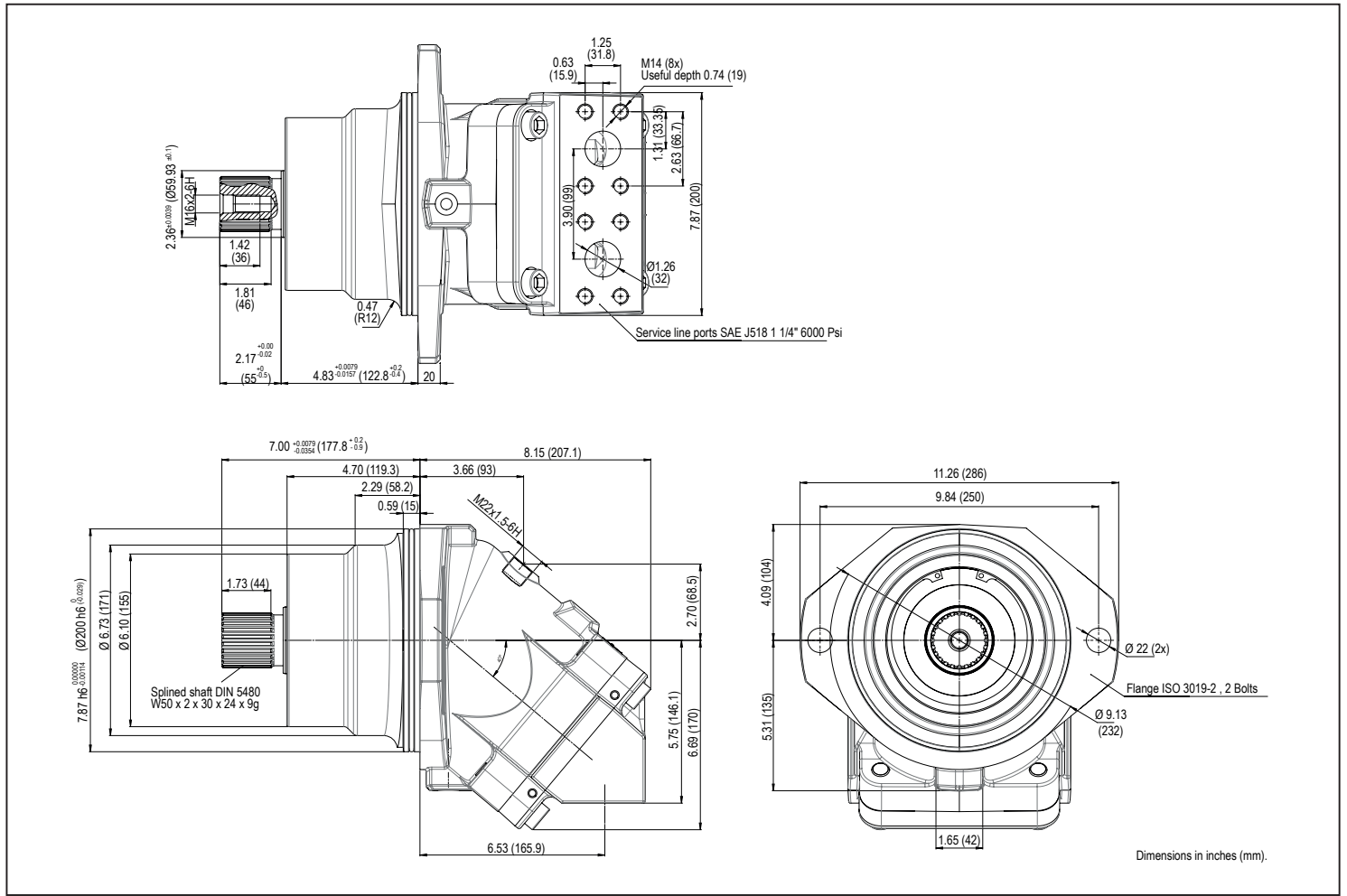
* Differential pressure between A and B.
For other forces, please contact us.



▶ Options available on request :

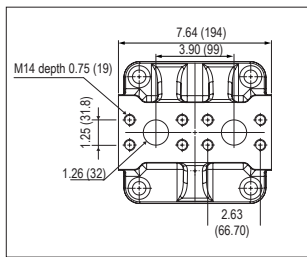
- ▶ Flushing valve ;
- ▶ Speed sensor.

► Dimensions with MSI160 BW1L0M100SVF configuration

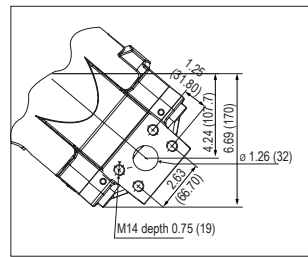


► Back cover configurations*

M0
SAE flange, rear
SAE 1 1/4 6000 psi

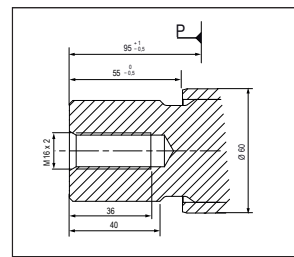


N0 or N1
SAE flange, side
SAE 1 1/4 6000 psi

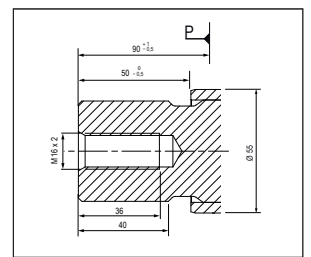


► Shaft configurations

W1
Splined shaft DIN 5480
W 50 x 2 x 30 x 24 x 9 g

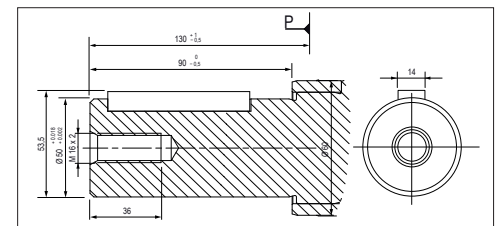


W2
Splined shaft DIN 5480
W 45 x 2 x 30 x 18 x 9 g



* Other configurations on request ; contact us.

D1
Cylindrical keyed shaft Ø 50 DIN 6885
AS 14 x 9 x 70



For further information, please feel free to contact our Technical Department.
Hervé COLIN - Tel : +33(0)3 83 76 05 37 - hcolin@hydroleduc.com



www.hydroleduc.com

HYDRO LEDUC SAS
Siège social & Usine
Head Office and Factory
BP 9
F-54122 AZERAILLES
FRANCE
Tel. +33 (0)3 83 76 77 40
Fax +33 (0)3 83 75 21 58

HYDRO LEDUC GmbH
Am Ziegelplatz 20
D-77746 SCHUTTERWALD
DEUTSCHLAND
Tel. +49 (0) 781-9482590
Fax + 49 (0) 781-9482592

HYDRO LEDUC AB
Betongvägen 11
461 38 TROLLHÄTTEN
SWEDEN
Tel. + 46 (0) 520 10 820

HYDRO LEDUC BV
Ericssonstraat 2
5121 ML Rijen
The Netherlands
Tel. +31 6 202 40 651

HYDRO LEDUC N.A. Inc.
19416 Park Row - Suite 170
HOUSTON, TEXAS 77084
USA
Tel. +1 281 679 9654
Fax +1 832 321 3553