



XRE41_P003000



Our new XRE41 is a quiet, high performance pump for your electrical applications.



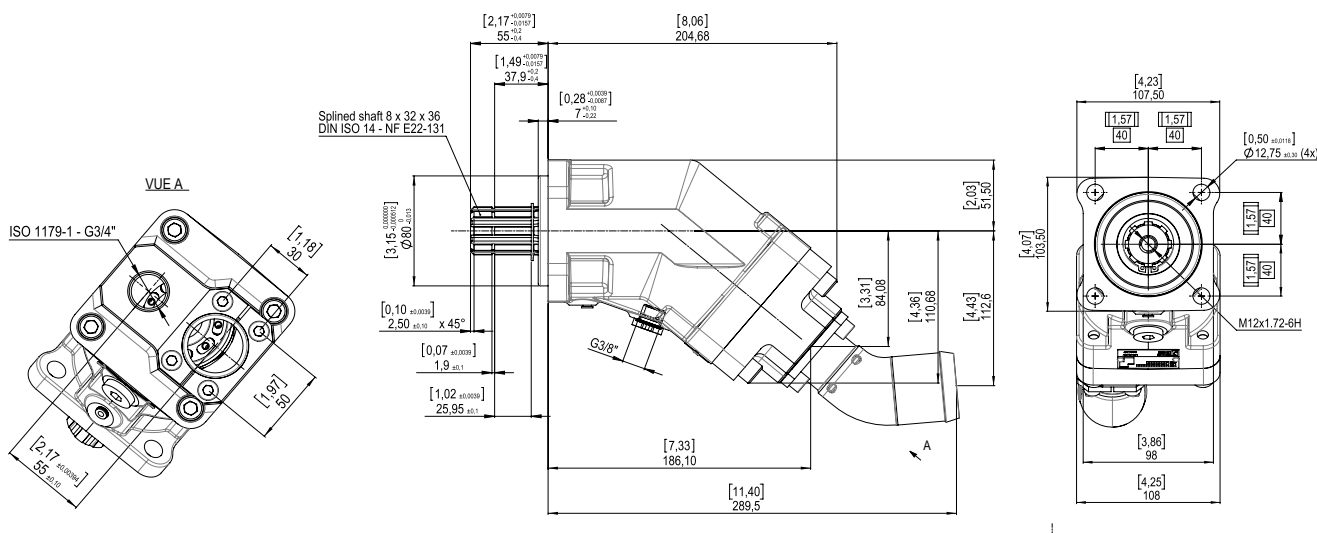
- ▶ Specially adapted for mounting on electric power take-off (ePTO).
- ▶ Piston pump with a displacement of 41 cm³.
- ▶ 9-piston design to reduce pulsation and lower noise level.
- ▶ Innovative distribution for more performance.
- ▶ Use of high strength materials
- ▶ Reinforced sealing
- ▶ High self priming speed
- ▶ Reduced footprint
- ▶ Original synchronization between the plate and the barrel
- ▶ 2" suction connection supplied with the pump
- ▶ Flange and shaft for truck application, according to DIN ISO 14/ NF E22-131

▶ Technical characteristics :

Reference	Direction of rotation	Displacement (cm ³ /tr)	Max. continuous pressure (bar)	Maximum intermittent peak pressure < 5 seconds (bar)	Max. speed ⁽¹⁾ (rpm)	Max. absorbed torque at 380 bar (N.m)	Weight		Overhang torque	
							Without inlet fitting (kg)	With inlet fitting 2" (kg)	Without inlet fitting (N.m)	With inlet fitting 2" (N.m)
XRE41_P003000	Right (CW)	41,2	400	450	2800	262,29	10,44	11	10,15	11,42

(1) At absolute pressure 1 bar, ISO VG46 fluid at 25°C.

▶ Dimensions in mm [inches] :



Dimensions in mm [inches] are given only as an indication.

For further information, please contact Customer Service (+33(0)3 83 76 77 40).

HYDRO LEDUC SAS
Siège social & Usine
Head Office and Factory
BP 9
F-54122 AZERAILLES
FRANCE
Tel. +33 (0)3 83 76 77 40
Fax +33 (0)3 83 75 21 58

HYDRO LEDUC GmbH
Am Ziegelplatz 20
D-77746 SCHUTTERWALD
DEUTSCHLAND
Tel. +49 (0) 781-9482590
Fax +49 (0) 781-9482592

HYDRO LEDUC AB
Betongvägen 11
461 38 TROLLHÄTTAN
SWEDEN
Tel. +46 (0) 520 10 820

HYDRO LEDUC BV
Ericssonstraat 2
5121 ML Rijen
The Netherlands
Tel. +31 6 202 40 651

HYDRO LEDUC N.A. Inc.
Grand Parkway Industrial Park
23549 Clay Road
KATY, TX 77493
USA
Tel. +1 281 679 9654



www.hydroleduc.com