



XR RANGE

Fixed displacement pumps for trucks



•
Low
noise

•
Compact
design

•
High
performance

POWER SOLUTION

FIXED DISPLACEMENT PUMPS FOR TRUCKS | XR SERIE

FEATURES AND BENEFITS



THE PRODUCT

- Bi-material back cover
- Easy to change direction of rotation
- 7 pistons design
- Swash plate & barrel
- Use of high mechanical resistance materials
- Reinforced sealing
- High overall efficiency
- Optimized overall envelop
- Inlet fitting supplied with the pump
- Low noise level
- Flange and shaft for truck application, according to DIN ISO 14
- High self-priming speed

THE APPLICATIONS

The XR serie is designed for truck equipment (truck cranes, forestry cranes, booms, multi-buckets, stabilizing jacks), winter equipment (spreaders, snow ploughs, turbines), fire trucks and more.

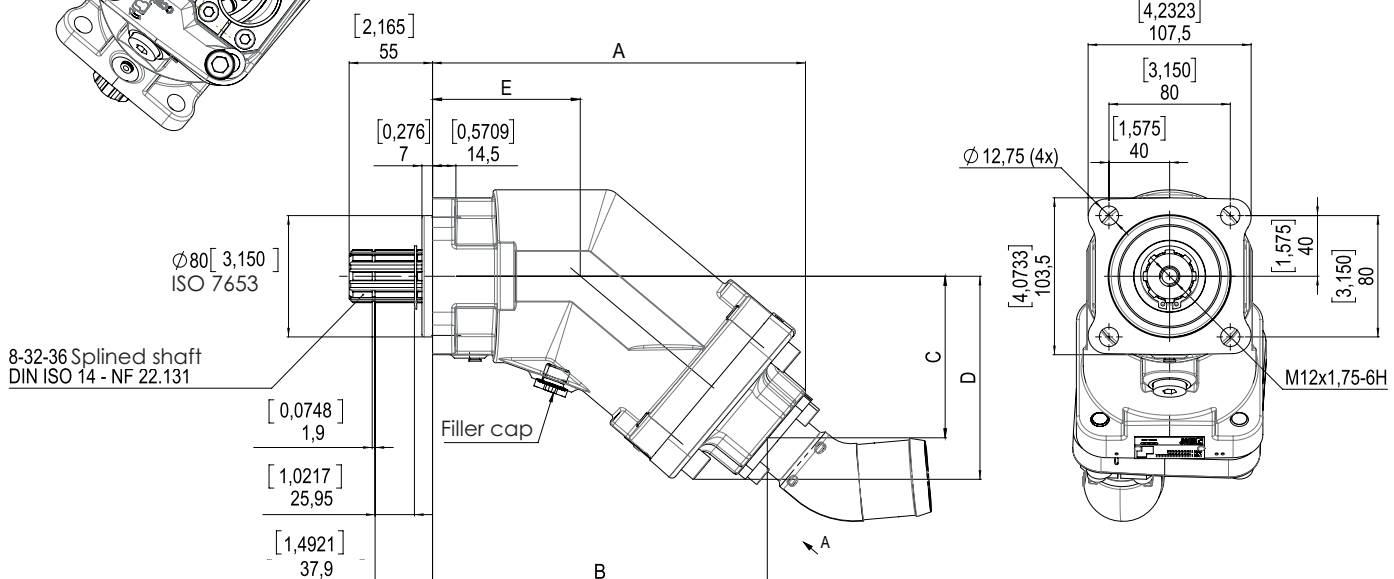
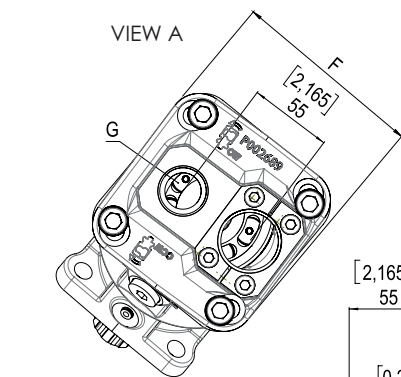
Ideal for heavy-duty use, thanks to its numerous innovative features. The extended lifespan and increased reliability have driven the development of this new generation of pumps.

Pump reference	Direction of rotation	Displacement (cc/rev)	Max. continuous pressure (bar)	Pressure max. at peak < 5 seconds (bar)	Max. speed ⁽¹⁾ (rpm)	Max. torque absorbed at 400 bar (N.m)	Weight		Overhang torque	
							Without inlet fitting (kg)	With inlet fitting 2" (kg)	Without inlet fitting (N.m)	With inlet fitting 2" (N.m)
XR63-P002890R	Right (CW)	63	400	450	2350	401,5	11,4	11,98	11,97	12,77
XR63-P002890L	Left (CCW)									
XR80-P002820R	Right (CW)	80	400	450	2350	512,2	14,89	15,47	17,21	18,73
XR80-P002820L	Left (CCW)									
XR108-P002880R	Right (CW)	108	400	450	2000	686,9	15,16	15,74	17,88	19,07
XR108-P002880L	Left (CCW)									
XR130-P002885R	Right (CW)	130	400	450	2000	825,5	15,39	15,97	18,01	19,55
XR130-P002885L	Left (CCW)									

(1) At absolute pressure 1 bar, ISO VG46 fluid at 25°C.

DIMENSIONS IN MM [INCHES]

Pump reference	A	B	C	D	E	F	G
XR63	220,7 [8.6889]	196,6 [7.7402]	95,2 [3.7480]	120,1 [4.7283]	85,7 [3.3740]	111,2 [4.3779]	G3/4"
XR80 / 108	245,9 [9.6811]	220,7 [8.6889]	106,5 [4.1929]	133,9 [5.2716]	97,4 [3.8346]	127,7 [5.0275]	G1"
XR130	248,2 [9.7716]	223 [8.779]	108,5 [4.2716]	136,5 [5.3740]	97,4 [3.8346]	127,7 [5.0275]	G1"



Dimensions in mm [inches] are given as an indication.

XR ACCESSORIES | BPR BY-PASS VALVE

For XR pump applications where the pump is driven by a continuous running PTO (which cannot be disengaged), this solution allows the continuous running of the pump:

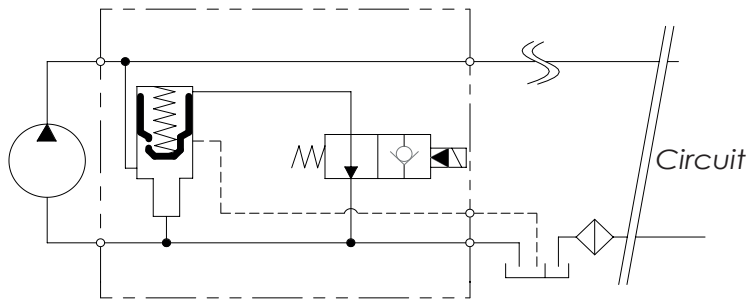
- Without creating problems of fluid overheating;
- Without affecting pump service life;
- With no modifications necessary to the hydraulic circuit of the equipment.



OPERATING MODE OF THE BY-PASS VALVE

The by-pass valve is a solenoid valve. When not activated, it enables pump output to link up to pump inlet. When it is activated, the pump operates normally (output flow).

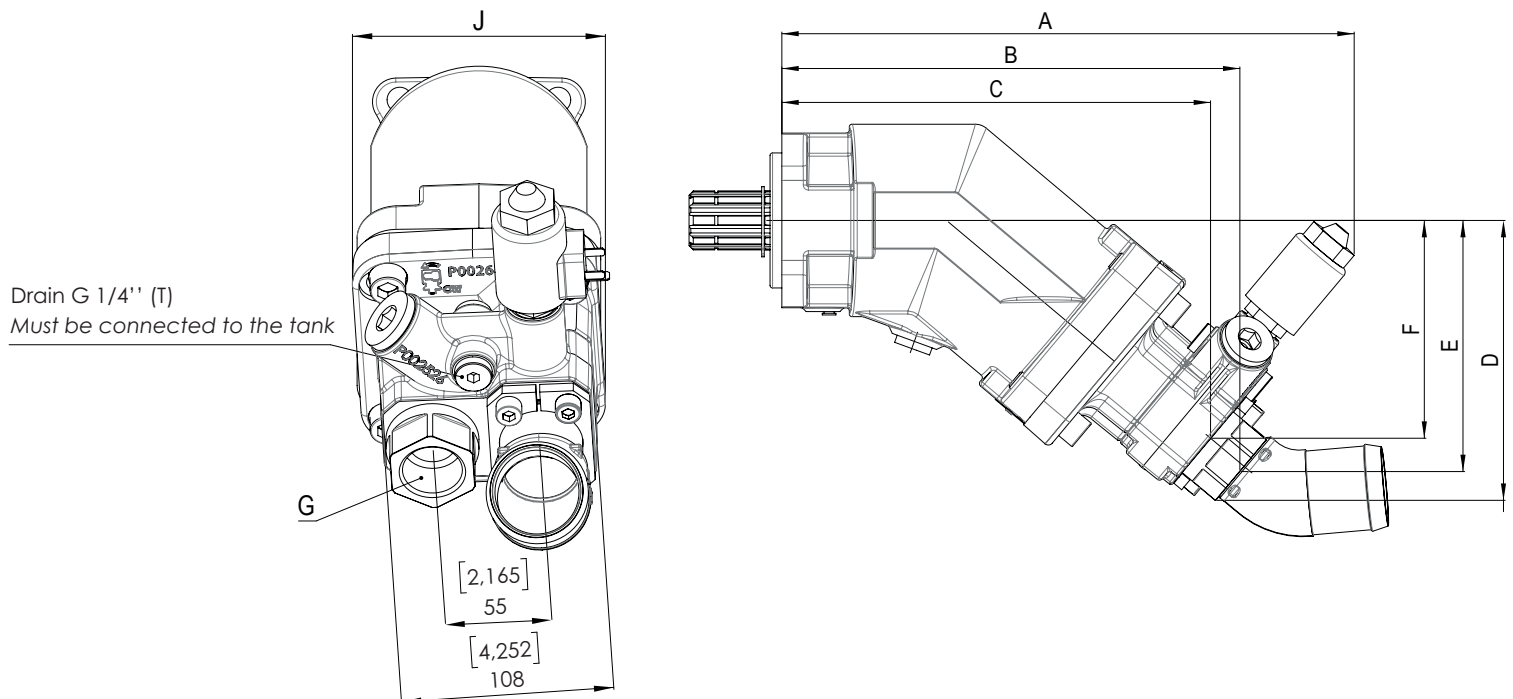
A drain line has to be installed between the by-pass valve and the hydraulic tank of the vehicle to ensure sufficient oil circulation and a good cooling into the pump. In any case, the connection to the tank must be done below the oil level.



Part number	Pump reference	Description
BPR63-P002965-B	XR63	Connector EN175301-803-A (24 Vdc)
BPR63-P003345-A		Connector DEUTSCH DT04-2P (24 Vdc)
BPR80-P002940-B	XR80 to XR130	Connector EN175301-803-A (24 Vdc)
BPR80-P003350-A		Connector DEUTSCH DT04-2P (24 Vdc)

DIMENSIONS IN MM [INCHES]

Pump reference	A	B	C	D	E	F	G	J
XR63	314,2 [12.3701]	247,2 [9.7323]	229 [9.016]	154,8 [6.0945]	137,5 [5.4134]	118,8 [4.6772]	G3/4"	111,2 [4.3779]
XR80 / 108	339,2 [13.3543]	271,4 [10.6850]	254 [10]	165,8 [6.5276]	148,8 [5.8583]	129,1 [5.0827]	G1"	127,7 [5.0275]
XR130	340,9 [13.4212]	273,7 [10.7756]	256,3 [10.0905]	167,8 [6.6063]	150,7 [5.9331]	131 [5.157]	G1"	127,7 [5.0275]

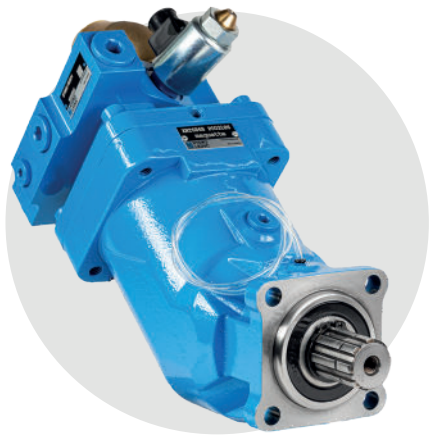


XR OVERHANG TORQUE WITH BYPASS

Pump reference	Weight		Overhang torque	
	Without inlet fitting (kg)	With inlet fitting 2" (kg)	Without inlet fitting (N.m)	With inlet fitting 2" (N.m)
XR63	14,21	14,83	17,97	19,63
XR80	17,62	18,24	24,54	26,34
XR108	17,91	18,54	24,68	26,50
XR130	18,16	18,78	25,23	27,06

FIXED DISPLACEMENT PUMPS FOR TRUCKS | XRT SERIE

FEATURES AND BENEFITS



THE PRODUCT

- Dual flow piston pump of 68 + 68 cc/rev
- 2 x 5 piston design
- Swash plate & barrel
- Use of high mechanical resistance materials
- Reinforced sealing
- High overall efficiency
- Optimized overall envelop
- Inlet fitting supplied with the pump
- Low noise level
- Flange and shaft for truck application, according to DIN ISO 14
- High self-priming speed
- Mounting on engine rear port possible with BPT by-pass valve

THE APPLICATIONS

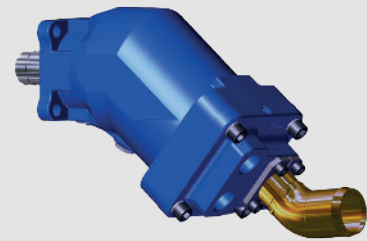
Our new XRT serie is designed for truck equipment (truck cranes, forestry cranes, booms, multi-buckets, stabilizing jacks), winter equipment (spreaders, snow ploughs, turbines), fire trucks and more.

Our new bent-axis pump is the ideal solution for applications requiring two independent circuits, and is specially adapted for mounting on a disengageable power take-off or engine rear drive (with BY-PASS BPT).

Pump reference	Direction of rotation	Displacement (cc/rev)	Max. continuous pressure (bar)	Pressure max. at peak < 5 seconds (bar)	Max. speed ⁽¹⁾ (rpm)	Max. torque absorbed at 380 bar (N.m)	Weight		Overhang torque	
							Without inlet fitting (kg)	With inlet fitting 2'' (kg)	Without inlet fitting (N.m)	With inlet fitting 2'' (N.m)
XRT 6868-P003380	Right (CW)	68 + 68	380	420	1400	823	18,7	19,3	23,8	24,6

(1) At absolute pressure 1 bar, ISO VG46 fluid at 25°C.

HOW DOES IT WORK

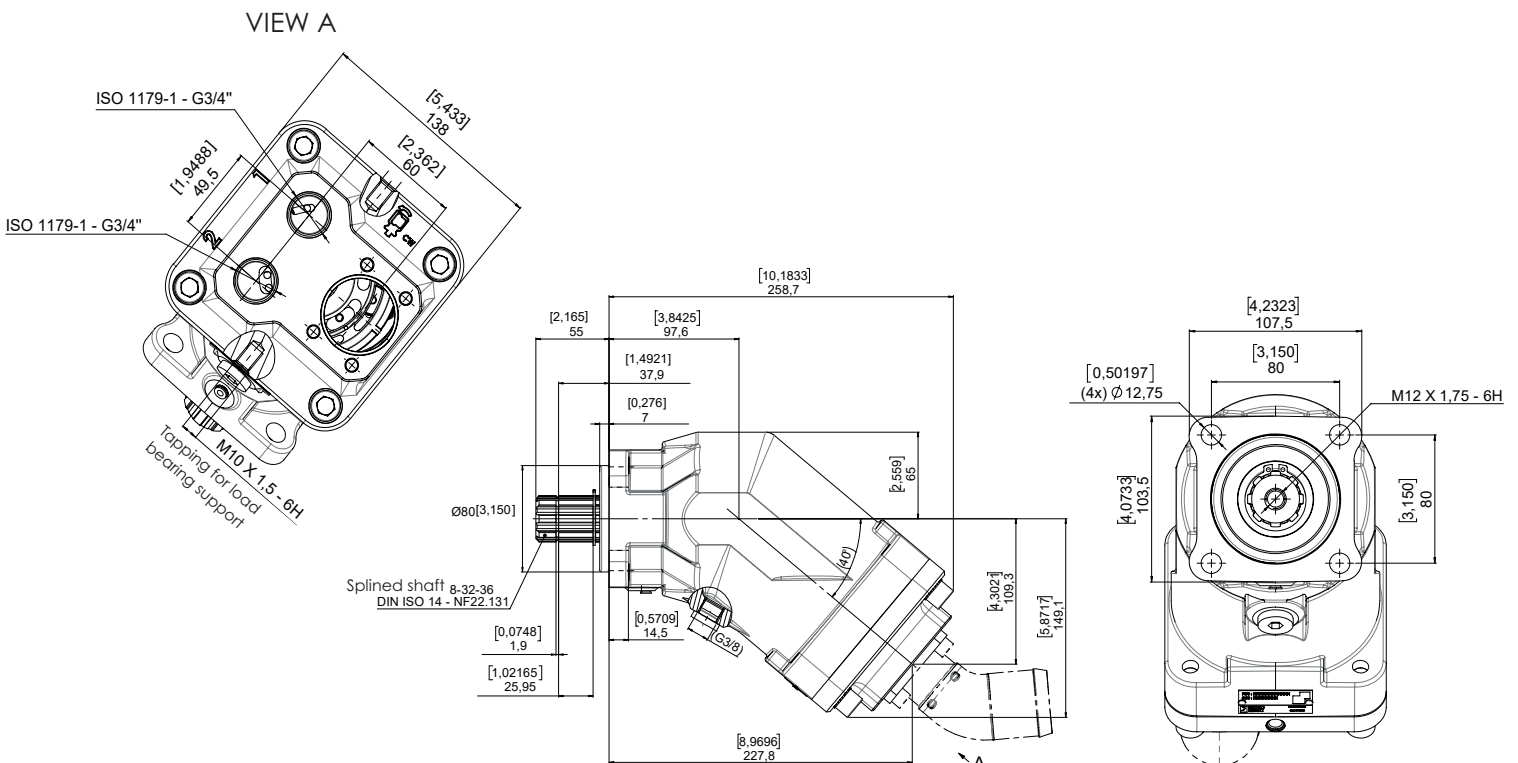


XRT6868

Watch the 3D animation video



DIMENSIONS IN MM [INCHES]



Dimensions in mm [inches] are given as an indication.

XRT ACCESSORIES | BPT BY-PASS VALVE

For XRT pump applications where the pump is driven by a continuous running PTO (which cannot be disengaged), this solution allows the continuous running of the pump:

- Without creating problems of fluid overheating;
- Without affecting pump service life;
- With no modifications necessary to the hydraulic circuit of the equipment.



OPERATING MODE OF THE BY-PASS VALVE

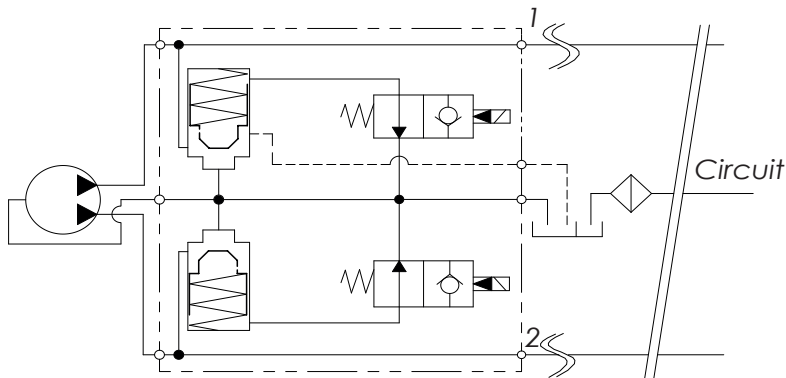
The by-pass valve is a solenoid valve.

When not activated, it allows both pump outputs to link up to pump inlet at the same time.

It has 3 modes of activation:

- 2-way activated: It sets the pump to normal operation,
- «Port 1» activated: It allows the discharge marked «1» to be put in a normal operating situation. The discharge «2» is connected to the pump suction,
- «Port 2» activated: This puts the discharge marked «2» in normal operation. Discharge «1» is connected to the pump suction.

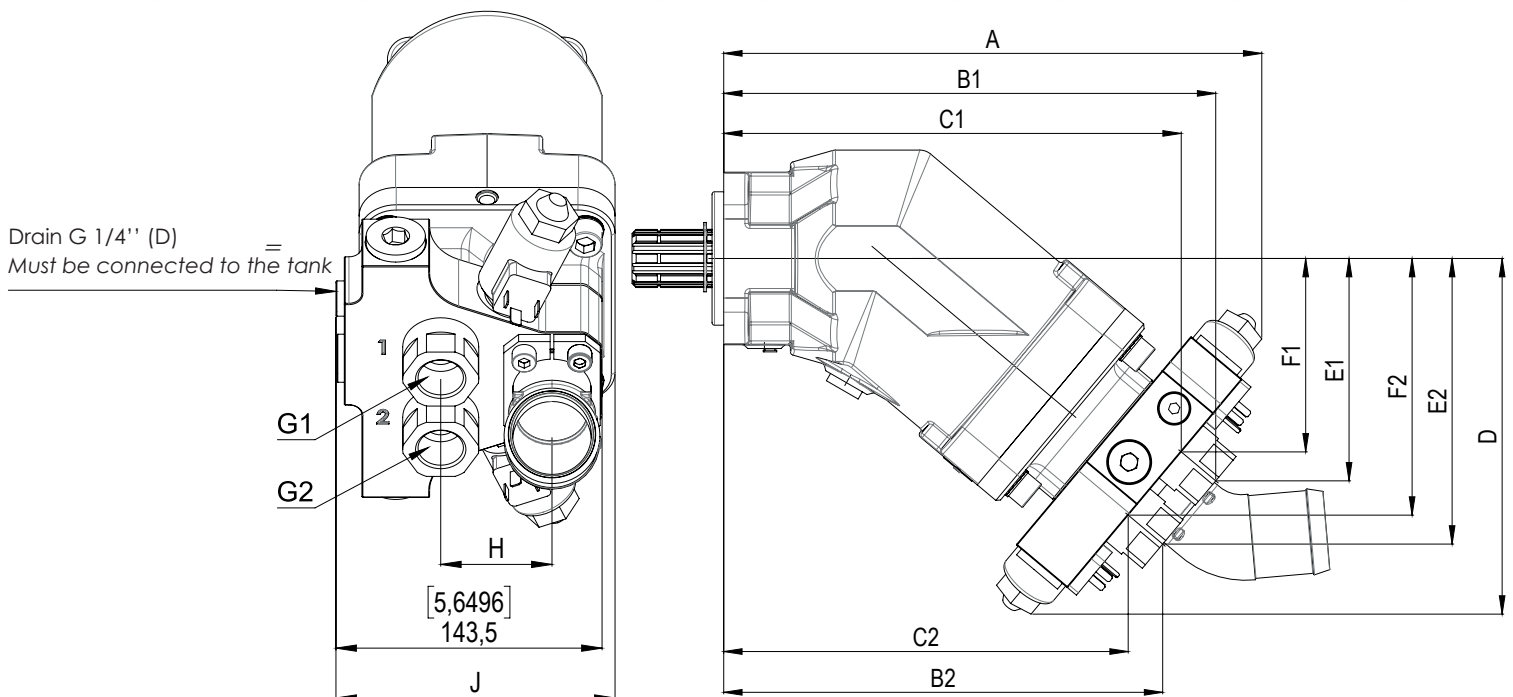
A drain line has to be installed between the by-pass valve and the hydraulic tank of the vehicle to ensure sufficient oil circulation and a good cooling into the pump.



Part number	Pump reference	Description
BPT6868-P002811	XRT6868	Connector DEUTSCH DT04-2P (24 Vdc)
BPT6868-P002814		Connector EN175301-803-A (24 Vdc)

DIMENSIONS IN MM [INCHES]

Pump reference	A	B1	B2	C1	C2	D	E1	E2	F1	F2	G1	G2	H	J
XRT6868	322,7 [12.7047]	295,1 [11.6181]	263,3 [10.3661]	274,4 [10.8031]	242,6 [9.5512]	213,3 [8.3976]	133,3 [5.2480]	171,3 [6.7441]	116 [4.5669]	153,9 [6.0591]	G3/4"	G3/4"	60 [2.3622]	150,5 [5.9252]



XRT OVERHANG TORQUE WITH BYPASS

Pump reference	Weight		Overhang torque	
	Without inlet fitting (kg)	With inlet fitting 2'' (kg)	Without inlet fitting (N.m)	With inlet fitting 2'' (N.m)
XRT6868	23,6	24,1	34,8	36,3

FIXED DISPLACEMENT PUMP FOR TRUCKS | XRE SERIE

FEATURES AND BENEFITS

THE PRODUCT

Specially designed for electric power take-off (ePTO).

Piston pump with a displacement of 41 or 63 cc. 9-piston design for reduced pulsation and lower noise level

Innovative timing for better performance

Use of high strength materials

Reinforced sealing

High self-priming speed

Optimized overall envelop

Swash plate & barrel

Inlet fitting supplied with the pump

Flange and shaft for truck application, according to DIN ISO 14

THE APPLICATIONS

Our XRe pump series is designed for truck-mounted equipment (truck cranes, forestry cranes, arms, hooklifts, stabilizer cylinders), winter equipment (salt spreaders, snowplows, blowers), fire trucks, and more.

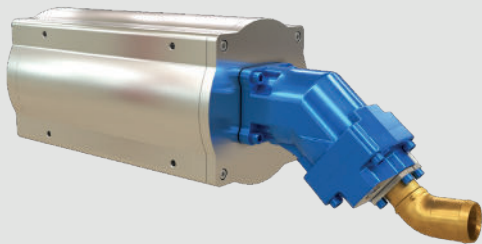
The new generation of bent-axis XRe pumps has been designed to work in connection with an electric transmission, such as an e-PTO system. Its specific design (9 pistons, advanced distribution) and the use of innovative production techniques (additive manufacturing) enable the XRe to maintain the performance of heavy-duty equipment, even in electric operation.



Pump reference	Direction of rotation	Displacement (cc/rev)	Max. continuous pressure (bar)	Pressure max. at peak < 5 seconds (bar)	Max. speed ⁽¹⁾ (tr/min)	Max. theoretical torque absorbed at max. continuous pressure (N.m)	Weight		Overhang torque	
							Without inlet fitting (kg)	With inlet fitting 2'' (kg)	Without inlet fitting (N.m)	With inlet fitting 2'' (N.m)
XRE41-P003000	Right (CW)	41	400	450	2800	262,4	10,44	11	10,15	11,42
XRE63-P003225	Right (CW)	63	320	450	2500	320,5	11,44	12,02	11,84	13,18

(1) At absolute pressure 1 bar, ISO VG46 fluid at 25°C.

HOW DOES IT WORK



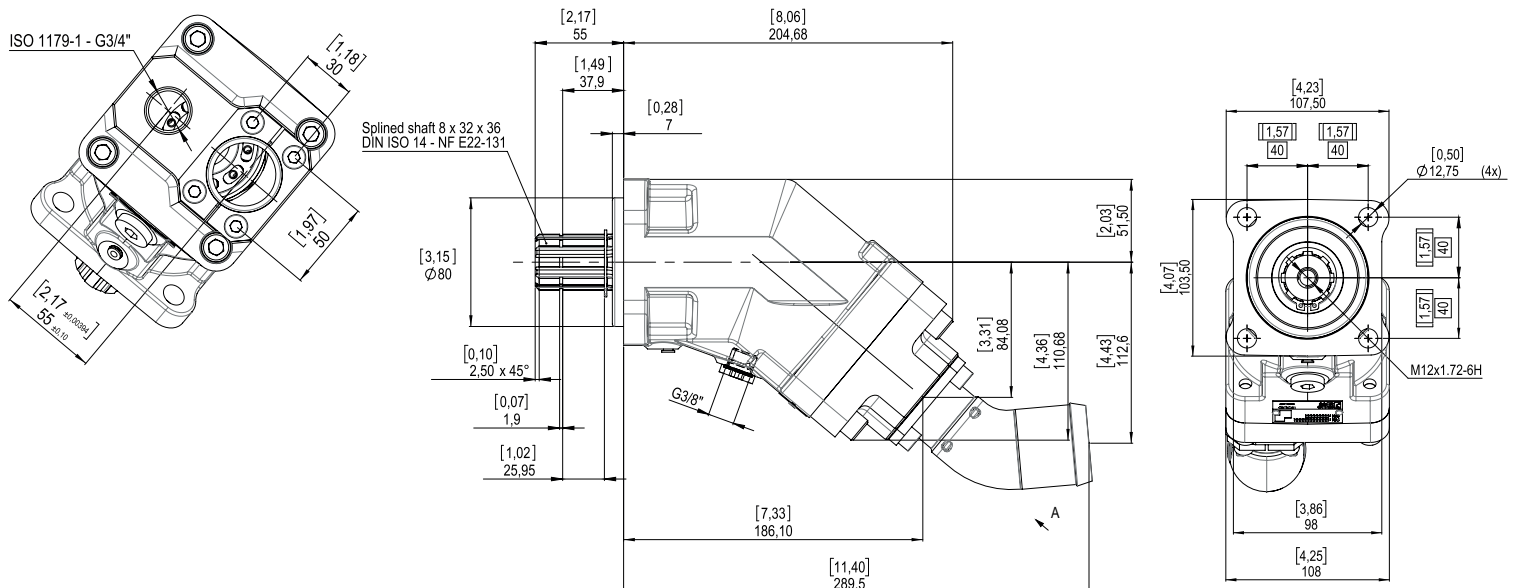
e-PTO + XRE41

Watch the 3D animation video



DIMENSIONS IN MM [INCHES]

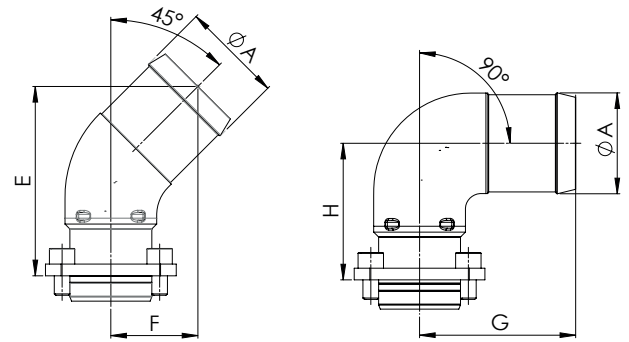
VIEW A



Dimensions in mm [inches] are given as an indication.

INLET FITTING FOR XR, XRT AND XRE PUMPS

Inlet fitting reference	Ø durite	ØA	E	F	G	H
P002790	Ø1''1/2 - 45°	40	92,5	41		
P002788	Ø1''3/4 - 45°	46	92,5	41		
P002787	Ø2'' - 45°	52	52	44,6		
P002786	Ø2''1/2 - 45°	65	112	52,1		
P003075	Ø3'' - 45°	78	125	56		
P003197	Ø1''1/2 - 90°	39			73,5	62,5
P003196	Ø2'' - 90°	52			80	70
P003195	Ø2''1/2 - 90°	65			80	70



SOME APPLICATIONS OF XR, XRT AND XRE PUMPS



Truck mixer



Crane



Car-transporter



Mobile crane



Refuse truck



Tank



Skiploader



Tipper



Concrete pump



Platform

(RE)DISCOVER OUR GEP7.3 POWER PACK UNIT

FEATURES AND BENEFITS

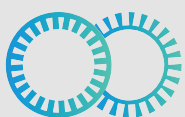
THE PRODUCT

- Electric motor + pump assembly up to 14kW
- Three-phase brushless electric motor (robust design)
- 7.3 cc/rev radial piston pump
- Integrated electronic controller
- Rated voltage of 12, 24, 48, 96 or 400Vdc
- Design for continuous operation
- Can be immersed in the oil tank (without controller)
- Extremely compact and lightweight
- High overall efficiency
- Designed for mobile applications

THE APPLICATIONS

- Particularly suitable for hybrid vehicles, the pump unit is easy to use, compact and light.
- The GEP7.3 electric pump unit consists of a brushless DC electric motor, a variable speed drive and a hydraulic radial piston pump.
- The oil circulation inside the unit provides optimal cooling of the motor and allows it to operate continuously. It can also be immersed (without the variator) in the oil tank.

HOW DOES IT WORK



EL MOTION

GEP 7.3

Watch the 3D animation video



All catalogs available on hydroeduc.com

HYDRO LEDUC SAS

SIÈGE SOCIAL & USINE
BP 9

F-54122 AZERAILLES
FRANCE

TÉL. +33(0)3 83 76 77 40

commercial_france@hydroleduc.com

exportsales@hydroleduc.com

HYDRO LEDUC GMBH

AM ZIEGELPLATZ 20
D-77746 SCHUTTERWALD
ALLEMAGNE

TÉL. +49 (0) 781-9482590

info.hld@hydroleduc.com

HYDRO LEDUC AB

BETONGVÄGEN 11
461 38 TROLLHÄTTAN
SUEDE

TÉL. +46 (0) 520 10 820

contact.nordic@hydroleduc.com

HYDRO LEDUC N.A., INC.

GRAND PARKWAY INDUSTRIAL PARK
23549 CLAY ROAD
KATY, TX 77493

USA

TÉL. +1 281 679 9654

us_sales@hydroleduc.com

HYDRO LEDUC BV

ERICSSONSTRAAT 2
5121 ML RIJEN
THE NETHERLANDS

TÉL. +31 6 202 40 651

jtaekema@hydroleduc.com

HYDRO LEDUC CHINA

TÉL. 0086-135 0173 6698

china-hl@hydroleduc.com

HYDRO LEDUC ITALY

TÉL. +39 340 466 1742

ppavia@hydroleduc.com



HYDRO LEDUC
SAS AU CAPITAL DE 4 065 000 €
EORI FR31902742100019
RC NANCY B 319 027 421
contact@hydroleduc.com
hydroleduc.com